

NF-M antibody [3H11]

Cat. No. GTX27256

Host	Mouse
Clonality	Monoclonal
Isotype	IgG1
Applications	WB, IHC-P
Reactivity	Human, Mouse, Rat, Avian

Package

50 µl

Applications

Application Note

*Optimal dilutions/concentrations should be determined by the researcher.

Suggested dilution	Recommended dilution
WB	1:2500
IHC-P	1:500

Not tested in other applications.

Calculated MW 96 kDa. ([Note](#))

Product Note Specifically recognizes the medium neurofilament subunit (~145-170 kDa).

Properties

Form	Liquid
Buffer	Ascites
Preservative	No preservatives
Storage	Store as concentrated solution. Centrifuge briefly prior to opening vial. For short-term storage (1-2 weeks), store at 4°C. For long-term storage, aliquot and store at -20°C or below. Avoid multiple freeze-thaw cycles.
Immunogen	Recombinant rat Neurofilament Medium fusion protein corresponding to the C-terminus [UniProt# P12839]
Purification	Unpurified
Conjugation	Unconjugated

Note

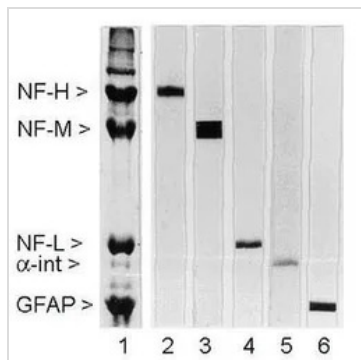
For laboratory research use only. Not for any clinical, therapeutic, or diagnostic use in humans or animals. Not for animal or human consumption.

Purchasers shall not, and agree not to enable third parties to, analyze, copy, reverse engineer or otherwise attempt to determine the structure or sequence of the product.



For full product information, images and publications, please visit our [website](#).

DATA IMAGES



GTX27256 WB Image

Rat spinal cord homogenate showing the major intermediate filament proteins of the nervous system (lane 1). The remaining lanes show blots of this material stained with various antibodies including GTX27256 (lane 3).



For full product information, images and publications, please visit our [website](#).