

GFAP antibody

Cat. No. GTX27260

Host	Rabbit
Clonality	Polyclonal
Isotype	IgG
Application	WB, ICC/IF, IHC-P
Reactivity	Human, Mouse, Rat, Zebrafish, Rabbit, Bovine, Dog, Chicken, Guinea pig, Pig, Horse

Reference (4)

Package

50 µl

APPLICATION

Application Note

*Optimal dilutions/concentrations should be determined by the researcher.

Suggested dilution	Recommended dilution
WB	1:5000 - 1:10000
ICC/IF	1:1000 - 1:5000
IHC-P	1:1000 - 1:5000

Not tested in other applications.

PROPERTIES

Form	Liquid
Buffer	Serum
Preservative	5mM Sodium azide
Storage	Store as concentrated solution. Centrifuge briefly prior to opening vial. For short-term storage (1-2 weeks), store at 4°C. For long-term storage, aliquot and store at -20°C or below. Avoid multiple freeze-thaw cycles.
Immunogen	Recombinant full-length human GFAP isotype 1 expressed in and purified from E. coli.
Purification	Unpurified
Conjugation	Unconjugated

Note

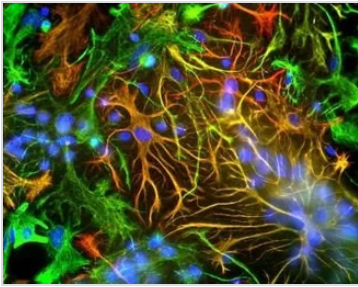
For laboratory research use only. Not for any clinical, therapeutic, or diagnostic use in humans or animals. Not for animal or human consumption.

Purchasers shall not, and agree not to enable third parties to, analyze, copy, reverse engineer or otherwise attempt to determine the structure or sequence of the product.



For full product information, images and publications, please visit our [website](#).

DATA IMAGES



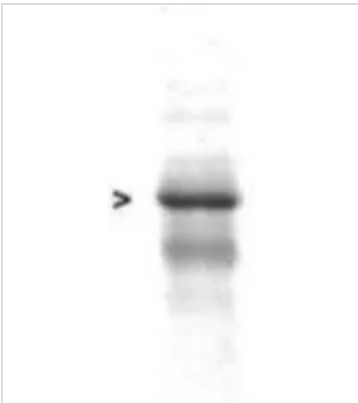
GTX27260 ICC/IF Image

ICC/IF analysis of mixed neuron/glia cell cultures using GTX27260 GFAP antibody. The fibroblastic cells contain only Vimentin and so are green. The astrocytes contain either Vimentin and GFAP (appearing golden) or predominantly GFAP (appearing red).

Red : GFAP antibody

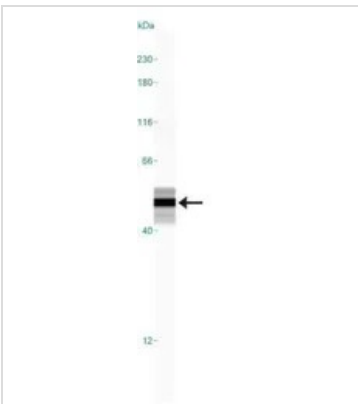
Green : Vimentin antibody

Blue : DAPI



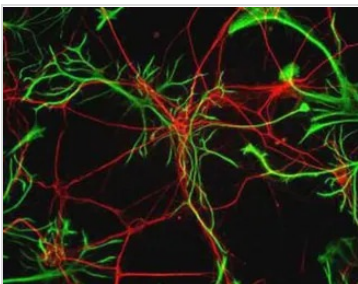
GTX27260 WB Image

WB analysis of rat cerebellum tissue using GTX27260 GFAP antibody.



GTX27260 WB Image

WB analysis of human brain tissue lysate using GTX27260 GFAP antibody.



GTX27260 ICC/IF Image

ICC/IF analysis of rat neuron cells using GTX27260 GFAP antibody.

Red : Neurofilament Heavy antibody

Green : GFAP antibody



For full product information, images and publications, please visit our [website](https://www.genetex.com).