

alpha Tubulin antibody [DM1A]

Cat. No. GTX27291

| | |
|---------------------|---|
| Host | Mouse |
| Clonality | Monoclonal |
| Isotype | IgG1 |
| Applications | WB, ICC/IF, IP, IHC |
| Reactivity | Human, Mouse, Rat, Yeast, Bovine, Dog, Chicken, Monkey, Fungi |

References (24)

Package

100 µg

Applications

Application Note

*Optimal dilutions/concentrations should be determined by the researcher.

| Suggested dilution | Recommended dilution |
|--------------------|----------------------|
| WB | 0.5-1 µg/ml |
| ICC/IF | 0.5-1 µg/ml |
| IP | Assay dependent |
| IHC | Assay dependent |

Not tested in other applications.

Product NoteThe antibody is specific for α -tubulin in immunoblotting assays and may be used for localization of α -tubulin in cultured cells or tissue sections. The antibody reacts best with chicken fibroblasts.

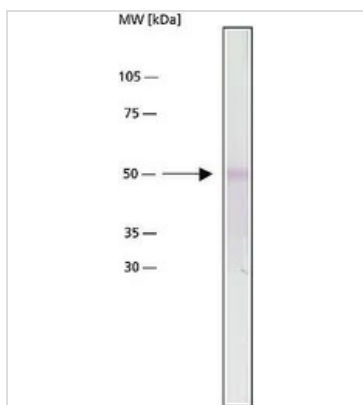
Properties

| | |
|----------------------|--|
| Form | Liquid |
| Buffer | PBS, 1% BSA |
| Preservative | 15mM Sodium azide |
| Storage | Store as concentrated solution. Centrifuge briefly prior to opening vial. For short-term storage (1-2 weeks), store at 4°C. For long-term storage, aliquot and store at -20°C or below. Avoid multiple freeze-thaw cycles. |
| Concentration | ~1 mg/ml (Please refer to the vial label for the specific concentration.) |
| Immunogen | microtubules from chicken embryo brain. |
| Purification | Purified immunoglobulin |
| Conjugation | Unconjugated |

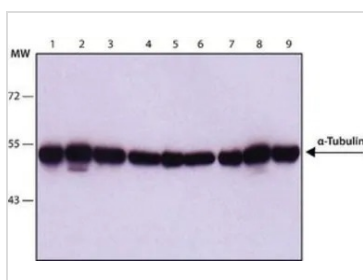
For full product information, images and publications, please visit our [website](#).

For laboratory research use only. Not for any clinical, therapeutic, or diagnostic use in humans or animals. Not for animal or human consumption.

Note
 Purchasers shall not, and agree not to enable third parties to, analyze, copy, reverse engineer or otherwise attempt to determine the structure or sequence of the product.

DATA IMAGES

GTX27291 WB Image

WB analysis of chicken gizzard extract using GTX27291 alpha Tubulin antibody [DM1A] at 1 µg/mL.


GTX27291 WB Image

WB analysis of (1) HeLa, (2) Jurkat, (3) COS7, (4) NIH-3T3, (5) PC-12, (6) RAT2, (7) CHO, (8) MDBK and (9) MDCK lysates using alpha Tubulin antibody [DM1A] at 1 µg/ml.



For full product information, images and publications, please visit our [website](#).