

RANTES antibody

Cat. No. GTX27314

Host	Rabbit
Clonality	Polyclonal
Isotype	IgG
Applications	WB, IHC-P, ELISA, Functional Assay
Reactivity	Human

Package
50 µg

Applications

Application Note

*Optimal dilutions/concentrations should be determined by the researcher.

Suggested dilution	Recommended dilution
WB	0.1-0.2µg/ml
IHC-P	Assay dependent
ELISA	0.5-2µg/ml
Functional Assay	Assay dependent

Not tested in other applications.

Calculated MW 10 kDa. ([Note](#))

Properties

Form	Liquid
Buffer	PBS
Preservative	No preservatives
Storage	Store as concentrated solution. Centrifuge briefly prior to opening vial. For short-term storage (1-2 weeks), store at 4°C. For long-term storage, aliquot and store at -20°C or below. Avoid multiple freeze-thaw cycles.
Concentration	1.0 mg/ml (Please refer to the vial label for the specific concentration.)
Immunogen	Recombinant Human RANTES
Purification	Purified by antigen-affinity chromatography
Conjugation	Unconjugated

Note

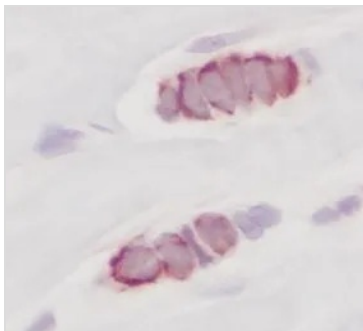
For laboratory research use only. Not for any clinical, therapeutic, or diagnostic use in humans or animals. Not for animal or human consumption.

Purchasers shall not, and agree not to enable third parties to, analyze, copy, reverse engineer or otherwise attempt to determine the structure or sequence of the product.



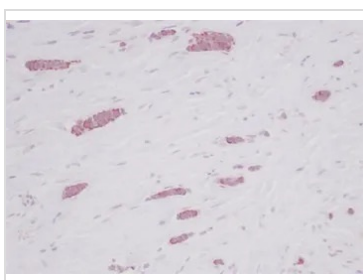
For full product information, images and publications, please visit our [website](#).

DATA IMAGES



GTX27314 IHC-P Image

IHC-P analysis of human breast invasive ductal carcinoma using GTX27314 RANTES antibody. Heat mediated antigen retrieval using citrate buffer pH6.0.



GTX27314 IHC-P Image

IHC-P analysis of human breast invasive ductal carcinoma using GTX27314 RANTES antibody. Heat mediated antigen retrieval using citrate buffer pH6.0.



For full product information, images and publications, please visit our [website](https://www.genetex.com).