

## Calf intestinal Alkaline Phosphatase antibody

**Cat. No. GTX27325**

<b>Host</b>	Rabbit
<b>Clonality</b>	Polyclonal
<b>Isotype</b>	IgG
<b>Applications</b>	WB, ICC/IF, IHC-Fr, IP, ELISA
<b>Reactivity</b>	Bovine

Package

1 mg

## Applications

**Application Note**

\*Optimal dilutions/concentrations should be determined by the researcher.

Suggested dilution	Recommended dilution
WB	1:2000-1:10000
ICC/IF	Assay dependent
IHC-Fr	1:1000-1:5000
IP	Assay dependent
ELISA	1:20000-1:100000

Not tested in other applications.

## Properties

<b>Form</b>	Liquid
<b>Buffer</b>	20mM Potassium Phosphate, 150mM NaCl
<b>Preservative</b>	0.01% Sodium azide
<b>Storage</b>	Store as concentrated solution. Centrifuge briefly prior to opening vial. For short-term storage (1-2 weeks), store at 4°C. For long-term storage, aliquot and store at -20°C or below. Avoid multiple freeze-thaw cycles.
<b>Concentration</b>	10 mg/ml (Please refer to the vial label for the specific concentration.)
<b>Immunogen</b>	Alkaline Phosphatase collected from calf intestine
<b>Purification</b>	IgG fraction This product is an IgG fraction antibody purified from monospecific antiserum by a multi-step process which includes delipidation, salt fractionation and ion exchange chromatography followed by extensive dialysis against the buffer stated above.
<b>Conjugation</b>	Unconjugated



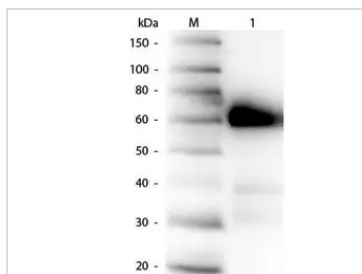
For full product information, images and publications, please visit our [website](#).

For laboratory research use only. Not for any clinical, therapeutic, or diagnostic use in humans or animals. Not for animal or human consumption.

**Note**

Purchasers shall not, and agree not to enable third parties to, analyze, copy, reverse engineer or otherwise attempt to determine the structure or sequence of the product.

## DATA IMAGES

**GTX27325 WB Image**

WB analysis of bovine intestine alkaline phosphatase using GTX27325 Calf intestinal Alkaline Phosphatase antibody.

Loading : 50 ng

Dilution : 1:1000

**GTX27325 WB Image**

WB analysis of bovine intestine alkaline phosphatase using GTX27325 Calf intestinal Alkaline Phosphatase antibody.

Loading : 1.5 µg

Dilution : 1:1000



For full product information, images and publications, please visit our [website](#).