

Ferritin antibody

Cat. No. GTX27332

Host	Rabbit
Clonality	Polyclonal
Isotype	IgG
Applications	WB, ICC/IF, FCM, ELISA, IHC, Lateral Flow, Multiplexing
Reactivity	Human

Package
1 mg

Applications

Application Note

*Optimal dilutions/concentrations should be determined by the researcher.

Suggested dilution	Recommended dilution
--------------------	----------------------

WB	1:2000-1:5000
ICC/IF	Assay dependent
FCM	Assay dependent
ELISA	1:5000-1:20000
IHC	1:200-1:1000
Lateral Flow	Assay dependent
Multiplexing	Assay dependent

Not tested in other applications.

Calculated MW 20 kDa. ([Note](#))

Properties

Form	Liquid
Buffer	20mM Potassium Phosphate, 150mM NaCl
Preservative	0.01% Sodium azide
Storage	Store as concentrated solution. Centrifuge briefly prior to opening vial. For short-term storage (1-2 weeks), store at 4°C. For long-term storage, aliquot and store at -20°C or below. Avoid multiple freeze-thaw cycles.
Concentration	10 mg/ml (Please refer to the vial label for the specific concentration.)
Immunogen	Ferritin collected from human spleen
Purification	IgG fraction This product is an IgG fraction antibody purified from monospecific antiserum by a multi-step process which includes delipidation, salt fractionation and ion exchange chromatography followed by extensive dialysis against the buffer stated above.



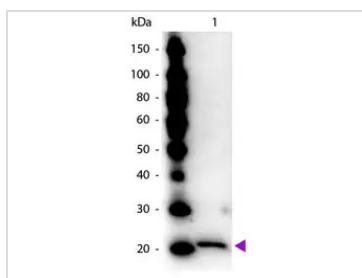
For full product information, images and publications, please visit our [website](#).

Conjugation Unconjugated

For laboratory research use only. Not for any clinical, therapeutic, or diagnostic use in humans or animals. Not for animal or human consumption.

Note Purchasers shall not, and agree not to enable third parties to, analyze, copy, reverse engineer or otherwise attempt to determine the structure or sequence of the product.

DATA IMAGES



GTX27332 WB Image

WB analysis of human ferritin protein using GTX27332 Ferritin antibody.

Loading : 50 ng

Dilution : 1:1000



For full product information, images and publications, please visit our [website](#).