

alpha 2 Macroglobulin antibody

Cat. No. GTX27337

Host	Goat
Clonality	Polyclonal
Isotype	IgG
Applications	WB, ELISA, IHC
Reactivity	Human

Package
1 mg

Applications

Application Note

*Optimal dilutions/concentrations should be determined by the researcher.

Suggested dilution	Recommended dilution
WB	1:2000-1:20000
ELISA	1:80000-1:400000
IHC	Assay dependent

Not tested in other applications.

Calculated MW 163 kDa. ([Note](#))

Properties

Form	Liquid
Buffer	20mM Potassium Phosphate, 150mM NaCl
Preservative	0.01% Sodium azide
Storage	Store as concentrated solution. Centrifuge briefly prior to opening vial. For short-term storage (1-2 weeks), store at 4°C. For long-term storage, aliquot and store at -20°C or below. Avoid multiple freeze-thaw cycles.
Concentration	10 mg/ml (Please refer to the vial label for the specific concentration.)
Immunogen	Alpha-2-Macroglobulin collected from human plasma
Purification	IgG fraction This product is an IgG fraction antibody purified from monospecific antiserum by a multi-step process which includes delipidation, salt fractionation and ion exchange chromatography followed by extensive dialysis against the buffer stated above.
Conjugation	Unconjugated

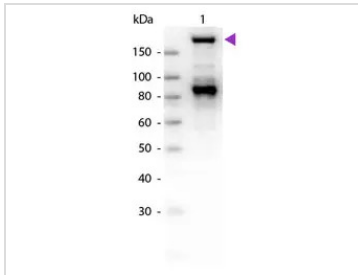


For full product information, images and publications, please visit our [website](#).

For laboratory research use only. Not for any clinical, therapeutic, or diagnostic use in humans or animals. Not for animal or human consumption.

Note

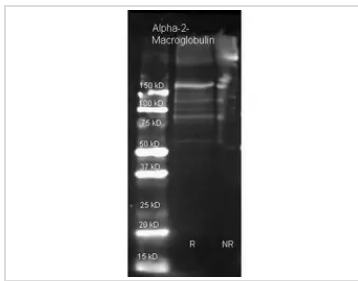
Purchasers shall not, and agree not to enable third parties to, analyze, copy, reverse engineer or otherwise attempt to determine the structure or sequence of the product.

DATA IMAGES

GTX27337 WB Image

WB analysis of human alpha 2 macroglobulin protein using GTX27337 alpha 2 Macroglobulin antibody.

Loading : 50 ng

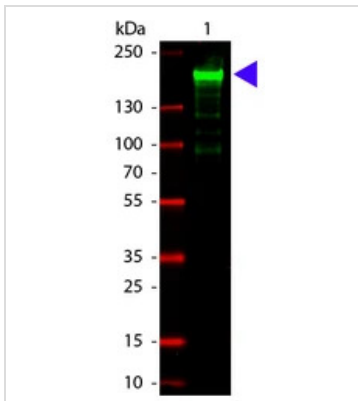
Dilution : 1:1000


GTX27337 WB Image

WB analysis of human alpha 2 macroglobulin protein under reducing (R) and non-reducing (NR) conditions using GTX27337 alpha 2 Macroglobulin antibody.

Loading : 1 µg

Dilution : 1:3000


GTX27337 WB Image

WB analysis of human alpha 2 macroglobulin protein using GTX27337 alpha 2 Macroglobulin antibody.

Loading : 100 ng

Dilution : 1:1000



For full product information, images and publications, please visit our [website](https://www.genetex.com).