

Acinus antibody

Cat. No. GTX27352

Host	Rabbit
Clonality	Polyclonal
Isotype	IgG
Applications	WB, ICC/IF, ELISA
Reactivity	Human

Package
100 µg

Applications

Application Note

*Optimal dilutions/concentrations should be determined by the researcher.

Suggested dilution	Recommended dilution
WB	1-10µg/ml
ICC/IF	10µg/ml
ELISA	Assay dependent

Not tested in other applications.

Calculated MW 152 kDa. ([Note](#))

Properties

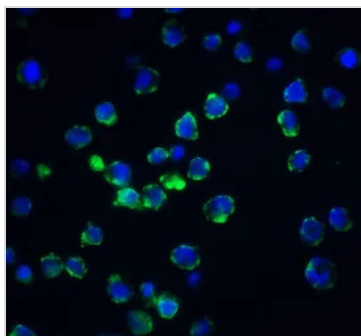
Form	Liquid
Buffer	PBS
Preservative	0.02% Sodium azide
Storage	Store as concentrated solution. Centrifuge briefly prior to opening vial. For short-term storage (1-2 weeks), store at 4°C. For long-term storage, aliquot and store at -20°C or below. Avoid multiple freeze-thaw cycles.
Concentration	Batch dependent (Please refer to the vial label for the specific concentration.)
Immunogen	Peptide corresponding to aa 1065-1080 of human AcinusL, aa 307-322 of human Acinus S and aa 338-353 of human AcinusS' which are identical to those of mouse Acinus. These sequences are located near the C-terminus of the cleaved active peptide p17.
Purification	Purified by affinity chromatography
Conjugation	Unconjugated

For full product information, images and publications, please visit our [website](#).

For laboratory research use only. Not for any clinical, therapeutic, or diagnostic use in humans or animals. Not for animal or human consumption.

Note

Purchasers shall not, and agree not to enable third parties to, analyze, copy, reverse engineer or otherwise attempt to determine the structure or sequence of the product.

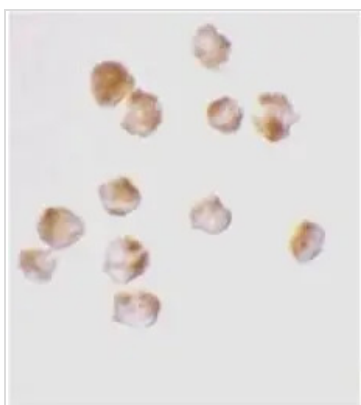
DATA IMAGES

GTX27352 ICC/IF Image

ICC/IF analysis of K562 cells using GTX27352 Acinus antibody.

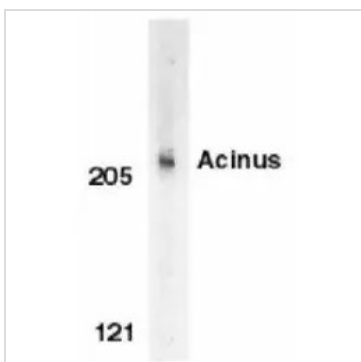
Green : Primary antibody

Blue : DAPI

Dilution : 20 µg/ml


GTX27352 ICC/IF Image

Immunocytochemical staining of K562 erythromyeloblastoid cells with rabbit anti Human Acinus (GTX27352)


GTX27352 WB Image

Western blot analysis of Acinus in K562 whole cell lysate with GTX27352



For full product information, images and publications, please visit our [website](#).