

Thymidylate synthase antibody

Cat. No. GTX27398

Host	Sheep
Clonality	Polyclonal
Isotype	IgG
Applications	WB, ELISA
Reactivity	Human

Package
1 mg

Applications

Application Note

*Optimal dilutions/concentrations should be determined by the researcher.

Suggested dilution	Recommended dilution
WB	1:500-1:2000
ELISA	1:10000-1:50000

Not tested in other applications.

Calculated MW 36 kDa. ([Note](#))

Product Note

Detects Thymidylate Synthase by immunochemistry in proliferating cell cultures and tissues but does not stain non-proliferating cells. Normal colon mucosa shows weak staining. However, some colorectal cancer specimens show very strong staining.

Properties

Form	Liquid
Buffer	20mM Potassium Phosphate, 150mM NaCl
Preservative	0.01% Sodium azide
Storage	Store as concentrated solution. Centrifuge briefly prior to opening vial. For short-term storage (1-2 weeks), store at 4°C. For long-term storage, aliquot and store at -20°C or below. Avoid multiple freeze-thaw cycles.
Concentration	10 mg/ml (Please refer to the vial label for the specific concentration.)
Immunogen	Recombinant human Thymidylate synthase (36 kDa) produced in E.coli .
Purification	IgG fraction
Conjugation	Unconjugated



For full product information, images and publications, please visit our [website](#).

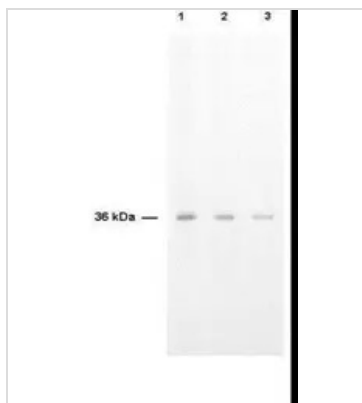
Date 2026 / 01 / 31 Page 1 of 2

For laboratory research use only. Not for any clinical, therapeutic, or diagnostic use in humans or animals. Not for animal or human consumption.

Note

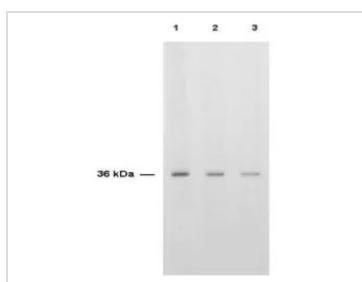
Purchasers shall not, and agree not to enable third parties to, analyze, copy, reverse engineer or otherwise attempt to determine the structure or sequence of the product.

DATA IMAGES



GTx27398 Image

Anti-TS is shown to detect thymidylate synthase present in a HeLa cell extract. Each lane is estimated to contain 4 µg of protein. Lanes 1, 2 and 3 represent 1:2,000, 1:5,000 and 1:10,000 fold dilutions of the antibody. Detection was made using HRP Rabbit-anti-Sheep IgG diluted 1:1,000 and color development using TMB (TMBM-100) substrate.



GTx27398 WB Image

WB analysis of HeLa whole cell lysate using GTx27398 Thymidylate synthase antibody.

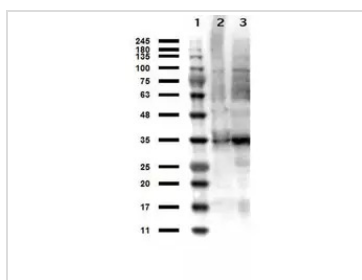
Dilution :

Lane 1 : 1:2000

Lane 2 : 1:5000

Lane 3 : 1:10000

Loading : 4 µg



GTx27398 WB Image

WB analysis of various samples using GTx27398 Thymidylate synthase antibody.

Lane 1 : Protein ladder

Lane 2 : HeLa whole cell lysate

Lane 3 : Molt-4 whole cell lysate

Loading : 10 µg

Dilution : 1 µg/mL



For full product information, images and publications, please visit our [website](https://www.genetex.com).