

CD252 antibody [OX-89]

Cat. No. GTX27434

Host	Rat
Clonality	Monoclonal
Isotype	IgG1
Applications	IHC-Fr, FCM
Reactivity	Mouse

Package
250 µg

Applications

Application Note

For FACS: Use at an assay dependent dilution. For IHC-Fr: Use at an assay dependent dilution. Optimal dilutions/concentrations should be determined by the end user.

Properties

Form	Liquid
Buffer	PBS
Preservative	0.02% Sodium azide
Storage	Store as concentrated solution. Centrifuge briefly prior to opening vial. For short-term storage (1-2 weeks), store at 4°C. For long-term storage, aliquot and store at -20°C or below. Avoid multiple freeze-thaw cycles.
Concentration	1 mg/ml (Please refer to the vial label for the specific concentration.)
Immunogen	CD4.CD134L chimeric protein
Purification	Protein G affinity purified
Conjugation	Unconjugated

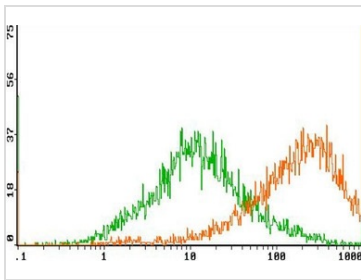
Note For laboratory research use only. Not for any clinical, therapeutic, or diagnostic use in humans or animals. Not for animal or human consumption.

Purchasers shall not, and agree not to enable third parties to, analyze, copy, reverse engineer or otherwise attempt to determine the structure or sequence of the product.



For full product information, images and publications, please visit our [website](#).

DATA IMAGES

**GTX27434 FCM Image**

Staining of 48hr LPS activated mouse spleen cells using CD134L antibody (GTX27434) and PE rat IgG1 isotype control.



For full product information, images and publications, please visit our [website](#).