

Protein A (HRP)

Cat. No. GTX27456-pro

Species Staphylococcus aureus

Package
1 mg

Properties

Form Liquid

Buffer 0.02M Potassium Phosphate (pH7.2), 0.15M Sodium Chloride

Preservative 0.01% Gentamicin Sulfate

Storage Store as concentrated solution. Centrifuge briefly prior to opening vial. Aliquot and store at -20°C or below. Avoid multiple freeze-thaw cycles.

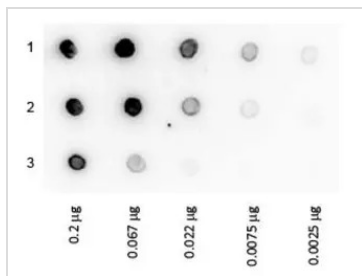
Concentration 2 mg/ml (Please refer to the vial label for the specific concentration.)

Expression System Native protein from Staphylococcus aureus

Conjugation Horseradish peroxidase(HRP)

Note For In vitro laboratory use only. Not for any clinical, therapeutic, or diagnostic use in humans or animals. Not for animal or human consumption.

DATA IMAGES



GTX27456-pro Image

Dot Blot analysis using Protein A (HRP) (GTX27456-pro). 1 : Human IgG. 2 : Golden Syrian Hamster IgG. 3 : Sheep IgG.

1:1000 for 60 min at RT.

Load: 200ng followed by a 3-fold serial dilution.



For full product information, images and publications, please visit our [website](#).