

Laminin antibody

Cat. No. GTX27463

Host	Rabbit
Clonality	Polyclonal
Isotype	IgG
Applications	WB, ICC/IF, IHC-P, IHC-Fr, IHC (Free Floating)
Reactivity	Human, Mouse, Rat, Rabbit, Sheep, Insect

References (6)
 Package
 100 µl

Applications

Application Note

*Optimal dilutions/concentrations should be determined by the researcher.

Suggested dilution	Recommended dilution
WB	1:100 - 1:5000
ICC/IF	1:50 - 1:200
IHC-P	1:500 - 1:2000
IHC-Fr	1:500 - 1:2000
IHC (Free Floating)	Assay dependent

Not tested in other applications.

Product Note

This is pan-specific and reacts well with all Laminin isoforms tested: Laminin-1 (alpha-1, beta-1, and gamma-1) and Laminin-2 (alpha-2, beta-1, and gamma-1).

Properties

Form	Liquid
Buffer	PBS
Preservative	0.05% Sodium azide
Storage	Store as concentrated solution. Centrifuge briefly prior to opening vial. For short-term storage (1-2 weeks), store at 4°C. For long-term storage, aliquot and store at -20°C or below. Avoid multiple freeze-thaw cycles.
Concentration	1 mg/ml (Please refer to the vial label for the specific concentration.)
Immunogen	Laminin isolated from mouse EHS tumor. [UniProt# P19137]
Purification	Purified IgG
Conjugation	Unconjugated



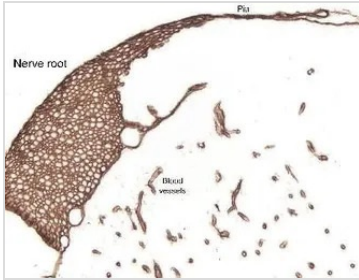
For full product information, images and publications, please visit our [website](#).

For laboratory research use only. Not for any clinical, therapeutic, or diagnostic use in humans or animals. Not for animal or human consumption.

Note

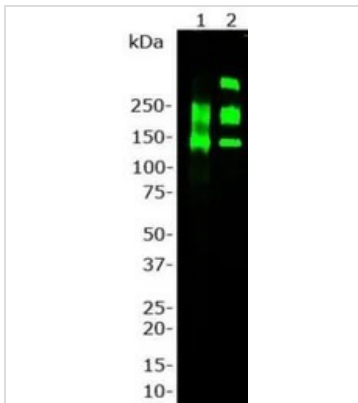
Purchasers shall not, and agree not to enable third parties to, analyze, copy, reverse engineer or otherwise attempt to determine the structure or sequence of the product.

DATA IMAGES



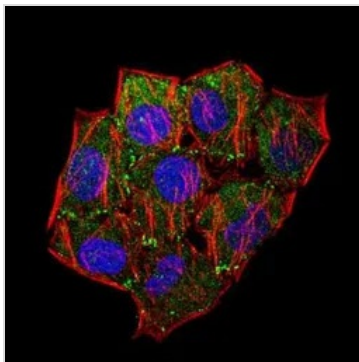
GTX27463 IHC-P Image

IHC-P analysis of rat spinal cord and dorsal root tissue using GTX27463 Laminin Antibody.
Antigen retrieval : Pepsin antigen retrieval



GTX27463 WB Image

WB analysis of rat heart cell lysates (lane 1) and purified laminin protein from mouse EHS sarcoma (lane 2) using GTX27463 Laminin Antibody. This antibody recognizes 3 laminin isotypes: alpha 1 (440kDa), beta 1 (220kD) and gamma 1 (220kDa). Also recognized is a laminin binding protein at 120kDa in both rat heart lysates and purified laminin protein. Since this protein always coexpresses with laminin this crossreactivity is irrelevant.



GTX27463 ICC/IF Image

ICC/IF analysis of HeLa cells using GTX27463 Laminin Antibody.
Green : primary antibody
Red : Actin
Blue : DAPI
Dilution : 1:5



For full product information, images and publications, please visit our [website](#).