

# SSEA-1 / CD15 antibody [MMA(LeuM1)] (ready-to-use)

**Cat. No. GTX27495**

<b>Host</b>	Mouse
<b>Clonality</b>	Monoclonal
<b>Isotype</b>	IgM
<b>Application</b>	IHC-P
<b>Reactivity</b>	Human

**Package**  
6 ml

## APPLICATION

### Application Note

\*Optimal dilutions/concentrations should be determined by the researcher.

Suggested dilution	Recommended dilution
IHC-P	Assay dependent

**Note : Recommendations for antigen retrieval : EDTA buffer pH 8.0 at room temperature for 30 mins.**

Not tested in other applications.

## PROPERTIES

<b>Form</b>	Liquid
<b>Buffer</b>	PBS
<b>Preservative</b>	0.09% Sodium azide
<b>Storage</b>	Store as concentrated solution. Centrifuge briefly prior to opening vial. Store at 4°C.
<b>Concentration</b>	Batch dependent (Please refer to the vial label for the specific concentration.)
<b>Immunogen</b>	BALB/C mice were injected with U937 histiocytic cell line.
<b>Purification</b>	Purified IgM
<b>Conjugation</b>	Unconjugated

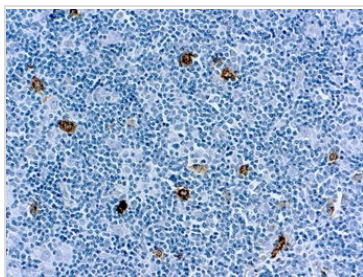
### Note

For laboratory research use only. Not for any clinical, therapeutic, or diagnostic use in humans or animals. Not for animal or human consumption.

Purchasers shall not, and agree not to enable third parties to, analyze, copy, reverse engineer or otherwise attempt to determine the structure or sequence of the product.



For full product information, images and publications, please visit our [website](#).

**DATA IMAGES**

**GTX27495 IHC-P Image**

IHC-P analysis of human tonsil tissue using GTX27495 SSEA-1 / CD15 antibody [MMA(LeuM1)] (ready-to-use).



For full product information, images and publications, please visit our [website](#).