

Cytokeratin 8 antibody [35βH11] (ready-to-use)

Cat. No. GTX27506

Host	Mouse
Clonality	Monoclonal
Isotype	IgM
Applications	IHC-P
Reactivity	Human

Package
6 ml

Applications

Application Note

*Optimal dilutions/concentrations should be determined by the researcher.

Suggested dilution	Recommended dilution
IHC-P	Assay dependent

Not tested in other applications.

Properties

Form	Liquid
Buffer	Tissue culture supernatant
Preservative	0.09% Sodium azide
Storage	Store as concentrated solution. Centrifuge briefly prior to opening vial. Store at 4°C.
Immunogen	BALB/C mice were immunized with cytoskeletal extract of human hepatocellular carcinoma cell line, Hep3B.
Purification	Unpurified
Conjugation	Unconjugated

Note

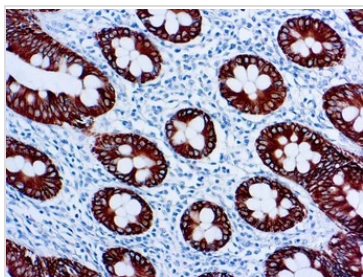
For laboratory research use only. Not for any clinical, therapeutic, or diagnostic use in humans or animals. Not for animal or human consumption.

Purchasers shall not, and agree not to enable third parties to, analyze, copy, reverse engineer or otherwise attempt to determine the structure or sequence of the product.



For full product information, images and publications, please visit our [website](#).

DATA IMAGES



GTX27506 IHC-P Image

IHC-P analysis of human colon tissue using GTX27506 Cytokeratin 8 antibody [35bE11] (ready-to-use).



For full product information, images and publications, please visit our [website](#).