

## CREB antibody

**Cat. No. GTX27540**

<b>Host</b>	Rabbit
<b>Clonality</b>	Polyclonal
<b>Isotype</b>	IgG
<b>Applications</b>	WB, ELISA, ChIP assay, EMSA
<b>Reactivity</b>	Human, Mouse, Rat

**Package**  
100 µl

## Applications

**Application Note**

\*Optimal dilutions/concentrations should be determined by the researcher.

Suggested dilution	Recommended dilution
WB	1:500-1:1000
ELISA	1:5000-1:25000
ChIP assay	Assay dependent
EMSA	0.5-1 µL per assay

Not tested in other applications.

**Calculated MW** 37 kDa. ([Note](#))

**Product Note** A partial cross-reactivity is observed against CREM-1 protein.

## Properties

<b>Form</b>	Liquid
<b>Buffer</b>	20mM Potassium Phosphate, 150mM NaCl
<b>Preservative</b>	0.01% Sodium azide
<b>Storage</b>	Store as concentrated solution. Centrifuge briefly prior to opening vial. For short-term storage (1-2 weeks), store at 4°C. For long-term storage, aliquot and store at -20°C or below. Avoid multiple freeze-thaw cycles.
<b>Concentration</b>	2.56 mg/ml (Please refer to the vial label for the specific concentration.)
<b>Immunogen</b>	CREB-1 (p43) peptide corresponding to a region near the N-terminus of the human protein, conjugated to KLH.
<b>Conjugation</b>	Unconjugated

**Note**

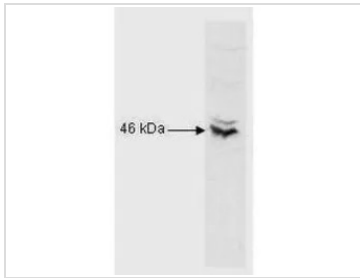
For laboratory research use only. Not for any clinical, therapeutic, or diagnostic use in humans or animals. Not for animal or human consumption.

Purchasers shall not, and agree not to enable third parties to, analyze, copy, reverse engineer or otherwise attempt to determine the structure or sequence of the product.

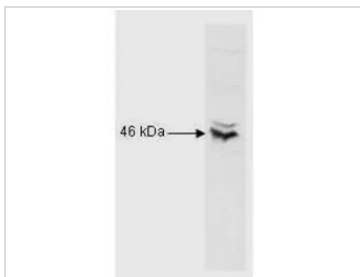


For full product information, images and publications, please visit our [website](#).

## DATA IMAGES

**GTX27540 WB Image**

Anti-CREB is shown to detect CREB-1 present in Raji B cell nuclear extract. Detection occurs using a 1:1,000 dilution of antibody followed by a 1:5,000 dilution of HRP Goat anti Rabbit IgG with visualization via ECL.

**GTX27540 WB Image**

WB analysis of Raji nuclear extract using GTX27540 CREB antibody.  
Dilution : 1:1000



For full product information, images and publications, please visit our [website](#).