

# RFX5 antibody

**Cat. No. GTX27542**

<b>Host</b>	Rabbit
<b>Clonality</b>	Polyclonal
<b>Isotype</b>	IgG
<b>Applications</b>	WB, ICC/IF, IP, ELISA, ChIP assay, EMSA
<b>Reactivity</b>	Human

**Package**  
100 µg

## Applications

### Application Note

\*Optimal dilutions/concentrations should be determined by the researcher.

Suggested dilution	Recommended dilution
WB	1:1000
ICC/IF	Assay dependent
IP	Assay dependent
ELISA	1:5000-1:25000
ChIP assay	Assay dependent
EMSA	0.5-1 µL

Not tested in other applications.

**Calculated MW** 65 kDa. ( [Note](#) )

## Properties

<b>Form</b>	Liquid
<b>Buffer</b>	20mM Potassium Phosphate, 150mM NaCl
<b>Preservative</b>	0.01% Sodium azide
<b>Storage</b>	Store as concentrated solution. Centrifuge briefly prior to opening vial. For short-term storage (1-2 weeks), store at 4°C. For long-term storage, aliquot and store at -20°C or below. Avoid multiple freeze-thaw cycles.
<b>Concentration</b>	1 mg/ml (Please refer to the vial label for the specific concentration.)
<b>Immunogen</b>	RFX5 peptide corresponding to a region at amino acids 320 to 494 of the human protein conjugated to KLH.
<b>Purification</b>	IgG fraction This product was prepared from monospecific antiserum by delipidation, salt fractionation and ion exchange chromatography.
<b>Conjugation</b>	Unconjugated

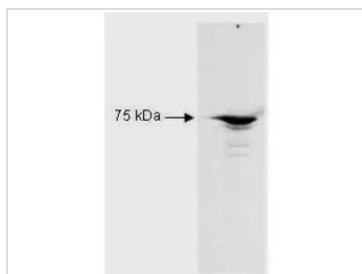


For full product information, images and publications, please visit our [website](#).

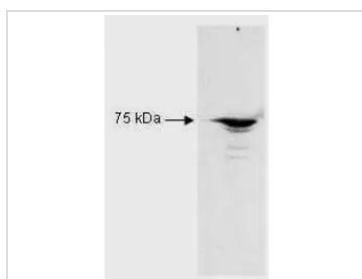
For laboratory research use only. Not for any clinical, therapeutic, or diagnostic use in humans or animals. Not for animal or human consumption.

**Note**

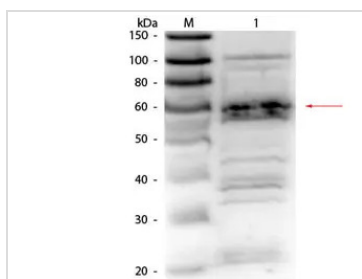
Purchasers shall not, and agree not to enable third parties to, analyze, copy, reverse engineer or otherwise attempt to determine the structure or sequence of the product.

**DATA IMAGES**

**GTx27542 WB Image**

Western Blot of Rabbit Anti-RFX5 antibody (GTx27542). Raji B cell nuclear extract lysates. Load: 35 µg per lane. Primary antibody: RFX5 antibody at 1:2,500 for overnight at 4°C. Secondary antibody: HRP Goat-a-Rabbit IgG at 1:5,000 for 45 min at RT.


**GTx27542 WB Image**

WB analysis of Raji nuclear extract using GTx27542 RFX5 antibody.  
Loading : 35 µg  
Dilution : 1:2500


**GTx27542 WB Image**

WB analysis of HeLa nuclear extract using GTx27542 RFX5 antibody.  
Loading : 25 µg  
Dilution : 1:1000



For full product information, images and publications, please visit our [website](https://www.genetex.com).