

IKB alpha antibody

Cat. No. GTX27545

Host	Rabbit
Clonality	Polyclonal
Isotype	IgG
Applications	WB, ELISA, EMSA, IHC
Reactivity	Human, Mouse, Rat

References (1)

Package

50 µl

Applications

Application Note

*Optimal dilutions/concentrations should be determined by the researcher.

Suggested dilution	Recommended dilution
WB	1:2000-1:10000
ELISA	1:20000-1:100000
EMSA	Assay dependent
IHC	1:1:1000-1:5000

Not tested in other applications.

Calculated MW 36 kDa. ([Note](#))

Properties

Form	Liquid
Buffer	20mM Potassium Phosphate, 150mM NaCl
Preservative	0.1% Sodium azide
Storage	Store as concentrated solution. Centrifuge briefly prior to opening vial. For short-term storage (1-2 weeks), store at 4°C. For long-term storage, aliquot and store at -20°C or below. Avoid multiple freeze-thaw cycles.
Concentration	80 mg/ml (Please refer to the vial label for the specific concentration.)
Immunogen	Synthetic IκBa peptide corresponding to a region near the C-terminus of the human protein.
Conjugation	Unconjugated

Note

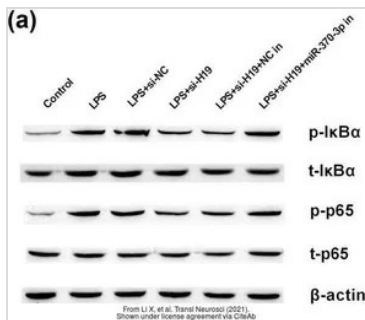
For laboratory research use only. Not for any clinical, therapeutic, or diagnostic use in humans or animals. Not for animal or human consumption.

Purchasers shall not, and agree not to enable third parties to, analyze, copy, reverse engineer or otherwise attempt to determine the structure or sequence of the product.



For full product information, images and publications, please visit our [website](#).

DATA IMAGES



GTx27545 WB Image

The data was published in the 2021 in Transl Neurosci. [PMID: 33708438](https://pubmed.ncbi.nlm.nih.gov/33708438/)



For full product information, images and publications, please visit our [website](https://www.genetex.com).