

NFkB p105/p50 antibody

Cat. No. GTX27549

Host	Rabbit
Clonality	Polyclonal
Isotype	IgG
Applications	WB, ELISA, EMSA
Reactivity	Human

References (1)

Package

100 µl

Applications

Application Note

*Optimal dilutions/concentrations should be determined by the researcher.

Suggested dilution	Recommended dilution
WB	1:500-1:2000
ELISA	1:5000-1:25000
EMSA	0.5-1 µL

Not tested in other applications.

Calculated MW 105 kDa. ([Note](#))

Properties

Form	Liquid
Buffer	Filtered-steriled serum
Preservative	0.01% Sodium azide
Storage	Store as concentrated solution. Centrifuge briefly prior to opening vial. For short-term storage (1-2 weeks), store at 4°C. For long-term storage, aliquot and store at -20°C or below. Avoid multiple freeze-thaw cycles.
Immunogen	Human NFkB p50 (NFKB1) peptide corresponding to a region near the N-terminus of the human protein conjugated to KLH.
Purification	Unpurified
Conjugation	Unconjugated

Note

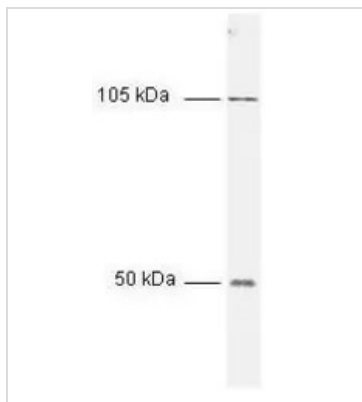
For laboratory research use only. Not for any clinical, therapeutic, or diagnostic use in humans or animals. Not for animal or human consumption.

Purchasers shall not, and agree not to enable third parties to, analyze, copy, reverse engineer or otherwise attempt to determine the structure or sequence of the product.



For full product information, images and publications, please visit our [website](#).

DATA IMAGES



GTX27549 WB Image

Western blot of HeLa cell extract. The membrane was blocked in 5% dry milk for 2 h. After washing, a 1:1,000 dilution of the primary antibody was added to the membrane and incubated for 2 h. Washes with buffer were performed 4 times for 5' each. The western blot was incubated with secondary antibody (HRP Goat-a-Rabbit IgG [H&L]) diluted 1:2,000 for 1 h. Washes with TBS preceded color development.



For full product information, images and publications, please visit our [website](#).