

IKK beta antibody

Cat. No. GTX27611

Host	Rabbit
Clonality	Polyclonal
Isotype	IgG
Applications	WB, IHC-P, ELISA
Reactivity	Human, Mouse, Rat

Package
100 µl

Applications

Application Note

*Optimal dilutions/concentrations should be determined by the researcher.

Suggested dilution	Recommended dilution
WB	1:200-1:1000
IHC-P	1:1:200-1:1000
ELISA	1:1000-1:5000

Not tested in other applications.

Calculated MW 87 kDa. ([Note](#))

Properties

Form	Liquid
Buffer	Filtered-steriled serum
Preservative	0.01% Sodium azide
Storage	Store as concentrated solution. Centrifuge briefly prior to opening vial. For short-term storage (1-2 weeks), store at 4°C. For long-term storage, aliquot and store at -20°C or below. Avoid multiple freeze-thaw cycles.
Immunogen	IKKb peptide corresponding to the highly conserved C-terminus region of the human protein conjugated to KLH.
Purification	Unpurified
Conjugation	Unconjugated

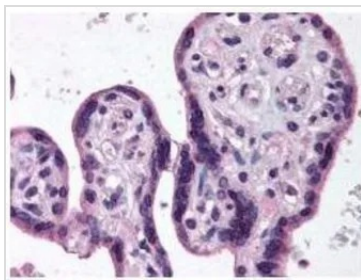
Note For laboratory research use only. Not for any clinical, therapeutic, or diagnostic use in humans or animals. Not for animal or human consumption.

Purchasers shall not, and agree not to enable third parties to, analyze, copy, reverse engineer or otherwise attempt to determine the structure or sequence of the product.

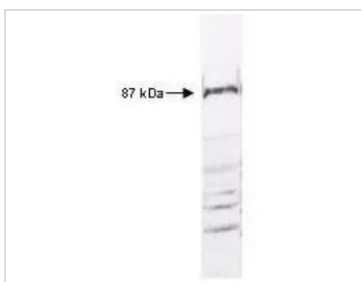


For full product information, images and publications, please visit our [website](#).

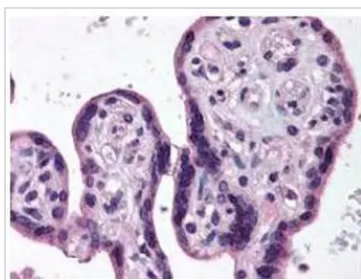
DATA IMAGES

**GTX27611 IHC-P Image**

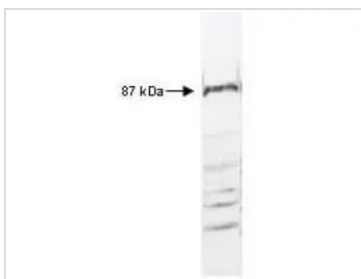
GeneTex's Anti-IKKs antibody was diluted 1:500 to detect IKKs in human placenta tissue. Tissue was formalin fixed and paraffin embedded. No pre-treatment of sample was required. The image shows the localization of antibody as the precipitated red signal, with a hematoxylin purple nuclear counter stain.

**GTX27611 WB Image**

Western blot of anti-IKKs antibody (GTX27611) reacted with HeLa cell extract. All incubations except color development were performed using TBS supplemented with 0.1% Tween-20 at room temperature. The membrane was blocked in 5% dry milk for 2 h. After washing, a 1:500 dilution of the primary antibody was added to the membrane and incubated for 2 h. Washes with buffer were performed 4 times for 5' each. The western blot was incubated with secondary antibody (HRP Goat anti Rabbit IgG (H&L)) diluted 1:2,000 for 1h. Washes with TBS preceded color development.

**GTX27611 IHC-P Image**

IHC-P analysis of human placenta tissue using GTX27611 IKK beta antibody.
Dilution : 1:500

**GTX27611 WB Image**

WB analysis of HeLa whole cell lysate using GTX27611 IKK beta antibody.
Dilution : 1:500



For full product information, images and publications, please visit our [website](#).