

alpha 1 Antitrypsin antibody

Cat. No. GTX27633

Host	Goat
Clonality	Polyclonal
Isotype	IgG
Applications	WB, ELISA
Reactivity	Human

Package
1 mg

Applications

Application Note

*Optimal dilutions/concentrations should be determined by the researcher.

Suggested dilution	Recommended dilution
WB	1:2000-1:10000
ELISA	1:20000-1:100000

Not tested in other applications.

Calculated MW 47 kDa. ([Note](#))

Properties

Form	Liquid
Buffer	20mM Potassium Phosphate, 150mM NaCl
Preservative	0.01% Sodium azide
Storage	Store as concentrated solution. Centrifuge briefly prior to opening vial. For short-term storage (1-2 weeks), store at 4°C. For long-term storage, aliquot and store at -20°C or below. Avoid multiple freeze-thaw cycles.
Concentration	10 mg/ml (Please refer to the vial label for the specific concentration.)
Immunogen	Alpha 1-Anti-Trypsin collected from human plasma
Purification	IgG fraction This product is an IgG fraction antibody purified from monospecific antiserum by a multi-step process which includes delipidation, salt fractionation and ion exchange chromatography followed by extensive dialysis against the buffer stated above.
Conjugation	Unconjugated

Note

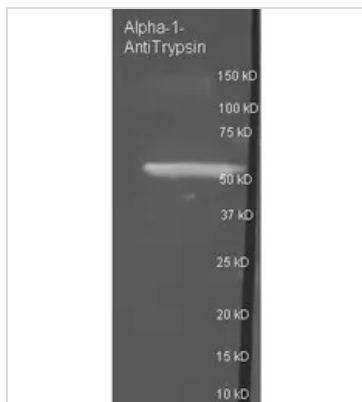
For laboratory research use only. Not for any clinical, therapeutic, or diagnostic use in humans or animals. Not for animal or human consumption.

Purchasers shall not, and agree not to enable third parties to, analyze, copy, reverse engineer or otherwise attempt to determine the structure or sequence of the product.



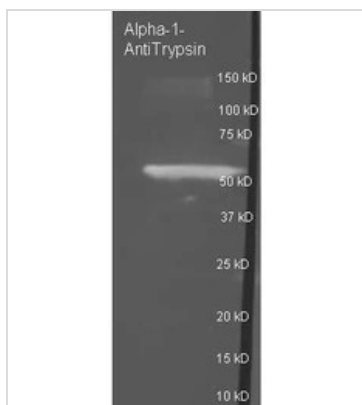
For full product information, images and publications, please visit our [website](#).

DATA IMAGES



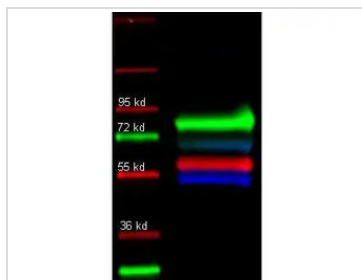
GTx27633 WB Image

Western Blot of Goat anti Alpha-1anti-Trypsin antibody. Lane 1: Alpha-1anti-Trypsin under reducing conditions. Lane 2: none. Load: 1 µg per lane. Primary antibody: Alpha-1anti-Trypsin antibody (GTx27633) at 1:3000 for overnight at 4°C. Secondary antibody: Fluorescent dye 488 conjugated Donkey anti goat secondary antibody at 1:10,000 for 45 min at RT. Block: overnight at 4°C. Predicted/Observed size: 55kDa for a-1 Anti-Trypsin. Other band(s): none



GTx27633 WB Image

WB analysis of human alpha 1 antitrypsin protein using GTx27633 alpha 1 Antitrypsin antibody.
Loading : 1 µg
Dilution : 1:3000



GTx27633 WB Image

WB analysis of human serum using GTx27633 alpha 1 Antitrypsin antibody.
Red : Primary antibody
Green : Transferrin
Blue : Human IgG
Loading : 35 µg
Dilution : 1:1000



GTx27633 WB Image

WB analysis of human serum with GST using GTx27633 alpha 1 Antitrypsin antibody.
Red : Primary antibody
Green : Transferrin
Blue : GST
Loading : 35 µg
Dilution : 1:1000



For full product information, images and publications, please visit our [website](https://www.genetex.com).