

Human Placenta (Normal) tissue lysate

Cat. No. GTX27695
Species Human

References (1)

Package

200 µg

PRODUCT

Summary Tissue total protein is prepared from whole tissue homogenates. It presents a consistent pattern on SDS-PAGE analysis. The total protein is stored in a buffer with protease inhibitor cocktail.

Tissue type Normal

Properties

Form Liquid

Buffer HEPES, MgCl₂, KCl, EDTA, Sodium deoxycholate, Sucrose, NP-40, Glycerol, a cocktail of protease inhibitors

Preservative No preservatives

Storage Store as concentrated solution. Centrifuge briefly prior to opening vial. Aliquot and store at -20°C or below. Avoid multiple freeze-thaw cycles.

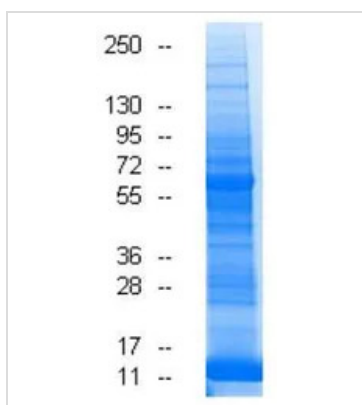
Concentration 5 mg/ml (Please refer to the vial label for the specific concentration.)

Note

For laboratory research use only. Not for any clinical, therapeutic, or diagnostic use in humans or animals. Not for animal or human consumption.

Purchasers shall not, and agree not to enable third parties to, analyze, copy, reverse engineer or otherwise attempt to determine the structure or sequence of the product.

DATA IMAGES



GTX27695 Image

SDS-PAGE analysis of GTX27695 Human Placenta (Normal) tissue lysate.


For full product information, images and publications, please visit our [website](#).