

MIP1 alpha antibody

Cat. No. GTX27738

Host	Rabbit
Clonality	Polyclonal
Isotype	IgG
Applications	WB, IP
Reactivity	Mouse, Rat

Package
500 µg

Applications

Application Note

For WB: Use at a dilution of 1:1,500 - 1:2,500. For IP: Use at a dilution of 1:400 - 1:600. Optimal dilutions/concentrations should be determined by the researcher.

Properties

Form	Liquid
Buffer	PBS
Preservative	0.1% Sodium azide
Storage	Store as concentrated solution. Centrifuge briefly prior to opening vial. For short-term storage (1-2 weeks), store at 4°C. For long-term storage, aliquot and store at -20°C or below. Avoid multiple freeze-thaw cycles.
Concentration	1 mg/ml (Please refer to the vial label for the specific concentration.)
Immunogen	Recombinant fragment - amino acids 1-69 of mature rat MIP-1a
Purification	Protein A affinity purified From polyclonal serum
Conjugation	Unconjugated

Note

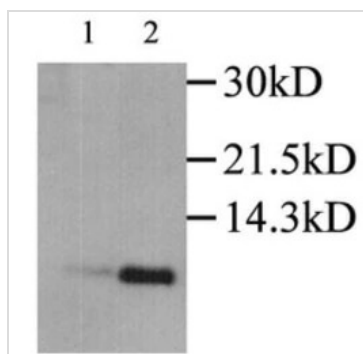
For laboratory research use only. Not for any clinical, therapeutic, or diagnostic use in humans or animals. Not for animal or human consumption.

Purchasers shall not, and agree not to enable third parties to, analyze, copy, reverse engineer or otherwise attempt to determine the structure or sequence of the product.



For full product information, images and publications, please visit our [website](#).

DATA IMAGES



GTx27738 WB Image

Rat MIP-1 alpha detected by Western blot in RAW264.7 cells treated with LPS (15 hr).

1. Lysate
2. Supernatant



For full product information, images and publications, please visit our [website](#).