

alpha Tubulin antibody [TU-01]

Cat. No. GTX27750

Host	Mouse
Clonality	Monoclonal
Isotype	IgG1
Application	WB, ICC/IF, IHC-P
Reactivity	Human, Mouse, Rat

Reference (1)
Package
100 µg

APPLICATION

Application Note

*Optimal dilutions/concentrations should be determined by the researcher.

Suggested dilution	Recommended dilution
WB	Assay dependent
ICC/IF	Assay dependent
IHC-P	Assay dependent

Not tested in other applications.

Product Note This antibody recognizes the defined epitope (aa 65-97) on N-terminal structural domain of alpha-tubulin.

PROPERTIES

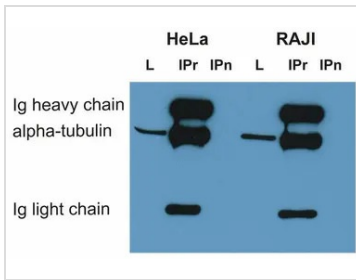
Form	Liquid
Buffer	PBS
Preservative	15mM Sodium azide
Storage	Store as concentrated solution. Centrifuge briefly prior to opening vial. Store at 4°C. DO NOT FREEZE.
Concentration	1 mg/ml (Please refer to the vial label for the specific concentration.)
Immunogen	Fraction of tubulin purified from porcine brain by two cycles of polymerization - depolymerization.
Purification	Purified by precipitation and chromatography
Conjugation	Unconjugated

Note For laboratory research use only. Not for any clinical, therapeutic, or diagnostic use in humans or animals. Not for animal or human consumption.

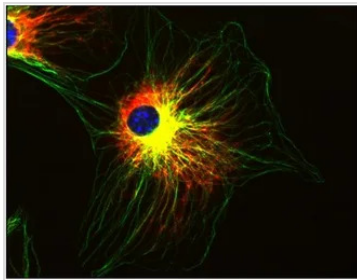
Purchasers shall not, and agree not to enable third parties to, analyze, copy, reverse engineer or otherwise attempt to determine the structure or sequence of the product.



For full product information, images and publications, please visit our [website](#).

DATA IMAGES

GTX27750 WB Image

WB analysis of various cell lysates using GTX27750 alpha Tubulin antibody [TU-01].

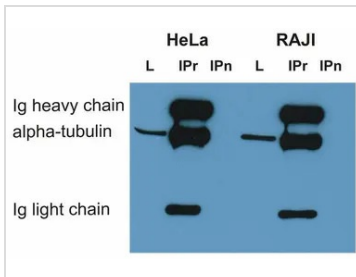

GTX27750 ICC/IF Image

ICC/IF analysis of 3T3 cells using GTX27750 alpha Tubulin antibody [TU-01].

Green : Primary antibody

Red : Vimentin

Blue : DAPI

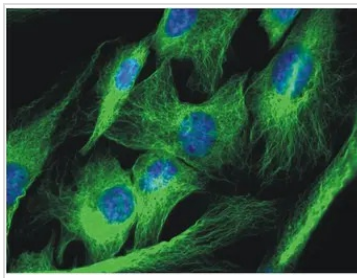

GTX27750 WB Image

IP analysis of HeLa and Raji cell lysate using GTX27749 alpha Tubulin antibody [TU-16]. The alpha tubulin signal was detected by GTX27750 alpha Tubulin antibody [TU-01]

L : Cell lysate

IPr : Immunoprecipitate lysate (reducing conditions)

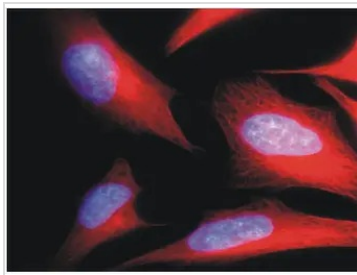
IPn : Immunoprecipitate lysate (non-reducing conditions)


GTX27750 ICC/IF Image

ICC/IF analysis of 3T3 cells using GTX27750 alpha Tubulin antibody [TU-01].

Green : Primary antibody

Blue : DAPI


GTX27750 ICC/IF Image

ICC/IF analysis of HeLa cells using GTX27750 alpha Tubulin antibody [TU-01].

Red : Primary antibody

Blue : DAPI



For full product information, images and publications, please visit our [website](https://www.genetex.com).