

beta Tubulin 3/ Tuj1 antibody [TU-20]

Cat. No. GTX27751

Host	Mouse
Clonality	Monoclonal
Isotype	IgG1
Applications	WB, ICC/IF, IHC-P, FCM, IHC
Reactivity	Human, Mouse, Rat, Bovine, Hamster, Pig, Baboon, Carp

References (8)

Package

100 µg

Applications

Application Note

*Optimal dilutions/concentrations should be determined by the researcher.

Suggested dilution	Recommended dilution
WB	Assay dependent
ICC/IF	Assay dependent
IHC-P	Assay dependent
FCM	Assay dependent
IHC	Assay dependent

Not tested in other applications.

Calculated MW 50 kDa. ([Note](#))**Product Note** This antibody recognizes C-terminal peptide sequence ESESQGPK (aa 441-448) of neuron-specific human betaIII-tubulin.

Properties

Form	Liquid
Buffer	PBS
Preservative	15mM Sodium azide
Storage	Store as concentrated solution. Centrifuge briefly prior to opening vial. Store at 4°C. DO NOT FREEZE.
Concentration	1 mg/ml (Please refer to the vial label for the specific concentration.)
Immunogen	Peptide (C) 441-448 coupled to maleimide-activated keyhole limpet hemocyanin via cysteine added to the N-terminus of the neuron-specific peptide.
Purification	Purified by precipitation and chromatography
Conjugation	Unconjugated



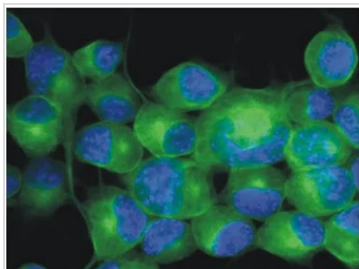
For full product information, images and publications, please visit our [website](#).

For laboratory research use only. Not for any clinical, therapeutic, or diagnostic use in humans or animals. Not for animal or human consumption.

Note

Purchasers shall not, and agree not to enable third parties to, analyze, copy, reverse engineer or otherwise attempt to determine the structure or sequence of the product.

DATA IMAGES



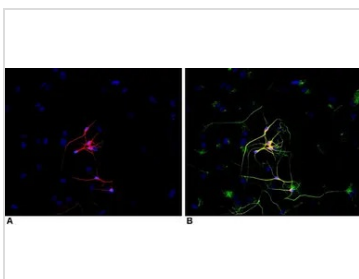
GTX27751 ICC/IF Image

ICC/IF analysis of Neuro2a cells using GTX27751 beta Tubulin 3/ Tuj1 antibody [TU-20].

Green : Primary antibody

Blue : DAPI

Diultion : 3µg/ml

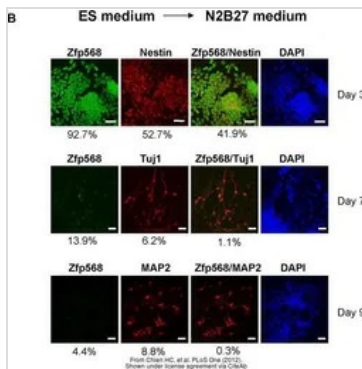


GTX27751 ICC/IF Image

ICC/IF analysis of P-19 cells stimulated to neuronal differentiation by retinoic acid using GTX27751 beta Tubulin 3/ Tuj1 antibody [TU-20] and GTX27792 beta Tubulin antibody [TU-06].

Panel A : GTX27751 (Red)

Panel B : GTX27751 (Red) and GTX27792 (Green)



GTX27751 ICC/IF Image

The data was published in the journal PLoS One in 2012. [PMID: 23071813](https://pubmed.ncbi.nlm.nih.gov/23071813/)



For full product information, images and publications, please visit our [website](http://www.genetex.com).