

## Cytokeratin 19 antibody [A53-B/A2]

Cat. No. GTX27754

Host	Mouse
Clonality	Monoclonal
Isotype	IgG2a
Applications	WB, ICC/IF, IHC-P, FCM, IP, ELISA
Reactivity	Human

References ( 1 )

Package

100 µg

## Applications

## Application Note

\*Optimal dilutions/concentrations should be determined by the researcher.

Suggested dilution	Recommended dilution
WB	Assay dependent
ICC/IF	Assay dependent
IHC-P	Assay dependent
FCM	Assay dependent
IP	Assay dependent
ELISA	Assay dependent

Not tested in other applications.

**Calculated MW** 44 kDa. ( [Note](#) )**Product Note** This antibody reacts with Rod domain of cytokeratin 19 (40 kDa) in human tissue.

## Properties

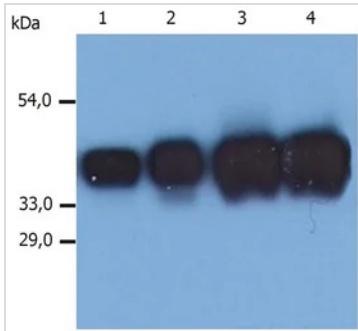
Form	Liquid
Buffer	PBS
Preservative	15mM Sodium azide
Storage	Store as concentrated solution. Centrifuge briefly prior to opening vial. Store at 4°C. DO NOT FREEZE.
Concentration	1 mg/ml (Please refer to the vial label for the specific concentration.)
Immunogen	MCF-7 human breast adenocarcinoma cell line
Purification	Protein A purified
Conjugation	Unconjugated

For full product information, images and publications, please visit our [website](#).

For laboratory research use only. Not for any clinical, therapeutic, or diagnostic use in humans or animals. Not for animal or human consumption.

**Note**

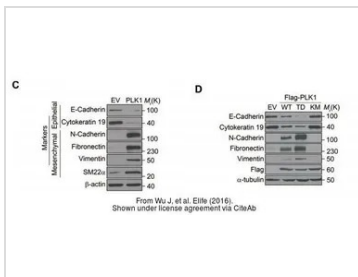
Purchasers shall not, and agree not to enable third parties to, analyze, copy, reverse engineer or otherwise attempt to determine the structure or sequence of the product.

**DATA IMAGES**

**GTX27754 WB Image**

WB analysis of MCF-7 cell lysate using GTX27754 Cytokeratin 19 antibody [A53-B/A2].

Lane 1,2 : GTX27755

Lane 3,4 : GTX27754


**GTX27754 WB Image**

The data was published in the journal Elife in 2016. [PMID: 27003818](https://doi.org/10.7554/elifesciences.27003)



For full product information, images and publications, please visit our [website](https://www.genetex.com).