

## HLA-G antibody [MEM-G/9]

Cat. No. GTX27758

Host	Mouse
Clonality	Monoclonal
Isotype	IgG1
Applications	ICC/IF, IHC-Fr, FCM, IP, ELISA, Sandwich ELISA
Reactivity	Human

References ( 1 )

Package

100 µg

## Applications

## Application Note

\*Optimal dilutions/concentrations should be determined by the researcher.

Suggested dilution	Recommended dilution
ICC/IF	Assay dependent
IHC-Fr	Assay dependent
FCM	Assay dependent
IP	Assay dependent
ELISA	Assay dependent
Sandwich ELISA	Assay dependent

**Note : Capture : GTX27758, Detection : GTX78317**

Not tested in other applications.

## Product Note

This antibody reacts with native form of human HLA-G1 on the cell surface as well as with soluble HLA-G5 isoform in its beta2-microglobulin associated form. Reactivity with HLA-G3 was also reported. The antibody MEM-G/9 is standard reagent thoroughly validated during 3rd International Conference on HLA-G (Paris, 2003). We do not recommend use of this product for Mouse samples.

## Properties

Form	Liquid
Buffer	PBS
Preservative	15mM Sodium azide
Storage	Store as concentrated solution. Centrifuge briefly prior to opening vial. Store at 4°C. DO NOT FREEZE.
Concentration	1 mg/ml (Please refer to the vial label for the specific concentration.)
Immunogen	Recombinant human HLA-G refolded with beta2-microglobulin and peptide.
Purification	Protein A purified



For full product information, images and publications, please visit our [website](#).

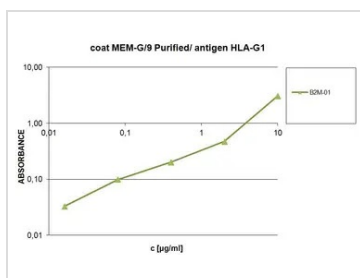
**Conjugation**

Unconjugated

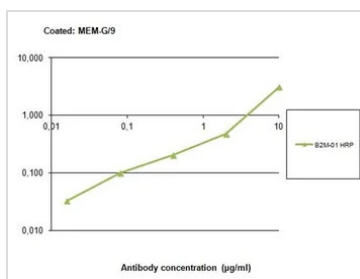
**Note**

For laboratory research use only. Not for any clinical, therapeutic, or diagnostic use in humans or animals. Not for animal or human consumption.

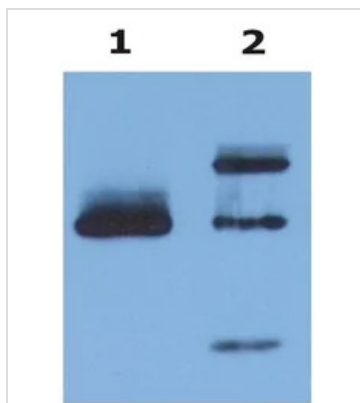
Purchasers shall not, and agree not to enable third parties to, analyze, copy, reverse engineer or otherwise attempt to determine the structure or sequence of the product.

**DATA IMAGES**

**GTX27758 ELISA Image**

Sandwich ELISA analysis of HLA-G and Beta 2-microglobulin in supernatant of HLA-G transfectants using GTX27758 HLA-G antibody [MEM-G/9] as capture antibody and GTX78317 beta 2 Microglobulin antibody [B2M-01] (HRP) as detection antibody.


**GTX27758 ELISA Image**

Sandwich ELISA analysis of human serum using GTX27758 HLA-G antibody [MEM-G/9] as capture antibody and GTX78317 beta 2 Microglobulin antibody [B2M-01] (HRP) as detection antibody.


**GTX27758 IP Image**

IP analysis of HLA-G1 transfectants using GTX27758 HLA-G antibody [MEM-G/9]. The signal was detected by GTX80268 HLA-G antibody [4H84] in WB assay.

Lane 1 : cell lysate

Lane 2 : HLA-G immunoprecipitate from cell lysate



For full product information, images and publications, please visit our [website](https://www.genetex.com).