

HLA-G antibody [MEM-G/1]

Cat. No. GTX27759

Host	Mouse
Clonality	Monoclonal
Isotype	IgG1
Applications	WB, IHC-P, IHC-Fr
Reactivity	Human

Package
100 µg

Applications

Application Note

*Optimal dilutions/concentrations should be determined by the researcher.

Suggested dilution	Recommended dilution
WB	Assay dependent
IHC-P	Assay dependent
IHC-Fr	Assay dependent

Not tested in other applications.

Calculated MW 38 kDa. ([Note](#))**Product Note** This antibody reacts with denaturated HLA-G heavy chain.

Properties

Form	Liquid
Buffer	PBS
Preservative	15mM Sodium azide
Storage	Store as concentrated solution. Centrifuge briefly prior to opening vial. Store at 4°C. DO NOT FREEZE.
Concentration	1 mg/ml (Please refer to the vial label for the specific concentration.)
Immunogen	Denatured bacterially expressed recombinant human HLA-G heavy chain.
Purification	Protein A purified
Conjugation	Unconjugated

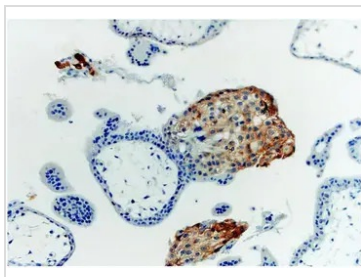
Note

For laboratory research use only. Not for any clinical, therapeutic, or diagnostic use in humans or animals. Not for animal or human consumption.

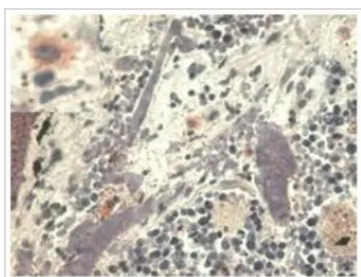
Purchasers shall not, and agree not to enable third parties to, analyze, copy, reverse engineer or otherwise attempt to determine the structure or sequence of the product.



For full product information, images and publications, please visit our [website](#).

DATA IMAGES

GTX27759 IHC-P Image

IHC-P analysis of first trimester placenta tissue using GTX27759 HLA-G antibody [MEM-G/1].


GTX27759 IHC-P Image

IHC-P analysis of pulmonary diseases tissue using GTX27759 HLA-G antibody [MEM-G/1].



For full product information, images and publications, please visit our [website](#).