

C-Peptide antibody [C-PEP-01]

Cat. No. GTX27761

| | |
|---------------------|---------------------------|
| Host | Mouse |
| Clonality | Monoclonal |
| Isotype | IgG1 |
| Applications | ICC/IF, IHC-P, ELISA, RIA |
| Reactivity | Human |

References (1)

Package

100 µg

Applications

Application Note

*Optimal dilutions/concentrations should be determined by the researcher.

| Suggested dilution | Recommended dilution |
|--------------------|----------------------|
| ICC/IF | Assay dependent |
| IHC-P | Assay dependent |
| ELISA | Assay dependent |
| RIA | Assay dependent |

Not tested in other applications.

Product Note

This antibody reacts specifically with C-peptide, No cross-reactivity with Insulin or other peptide hormones or proteins was observed.

Properties

| | |
|----------------------|--------------------------------------------------------------------------------------------------------|
| Form | Liquid |
| Buffer | PBS |
| Preservative | 15mM Sodium azide |
| Storage | Store as concentrated solution. Centrifuge briefly prior to opening vial. Store at 4°C. DO NOT FREEZE. |
| Concentration | 1 mg/ml (Please refer to the vial label for the specific concentration.) |
| Immunogen | Human C-peptide conjugated to bovine serum albumin. |
| Purification | Purified by precipitation and chromatography |
| Conjugation | Unconjugated |

Note

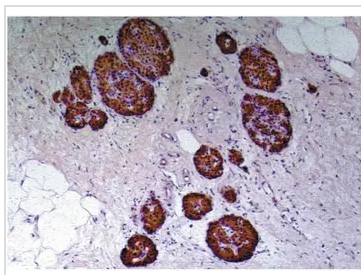
For laboratory research use only. Not for any clinical, therapeutic, or diagnostic use in humans or animals. Not for animal or human consumption.

Purchasers shall not, and agree not to enable third parties to, analyze, copy, reverse engineer or otherwise attempt to determine the structure or sequence of the product.



For full product information, images and publications, please visit our [website](#).

DATA IMAGES



GTX27761 IHC-P Image

IHC-P analysis of human pancreas tissue using GTX27761 C-Peptide antibody [C-PEP-01].



For full product information, images and publications, please visit our [website](#).