

Growth Cone Marker antibody [2G13]

Cat. No. GTX27762

| | |
|---------------------|---------------------|
| Host | Mouse |
| Clonality | Monoclonal |
| Isotype | IgM |
| Applications | IHC-P, IHC-Fr |
| Reactivity | Mouse, Rat, Chicken |

Package
1 ml

Applications

Application Note

*Optimal dilutions/concentrations should be determined by the researcher.

| Suggested dilution | Recommended dilution |
|--------------------|----------------------|
| IHC-P | Assay dependent |
| IHC-Fr | Assay dependent |

Not tested in other applications.

Properties

| | |
|---------------------|--|
| Form | Liquid |
| Buffer | Tissue culture supernatant |
| Preservative | 0.09% Sodium azide |
| Storage | Store as concentrated solution. Centrifuge briefly prior to opening vial. For short-term storage (1-2 weeks), store at 4°C. For long-term storage, aliquot and store at -20°C or below. Avoid multiple freeze-thaw cycles. |
| Immunogen | Chick embryonic tectal membranes. |
| Purification | Tissue Culture Supernatant |
| Conjugation | Unconjugated |

Note

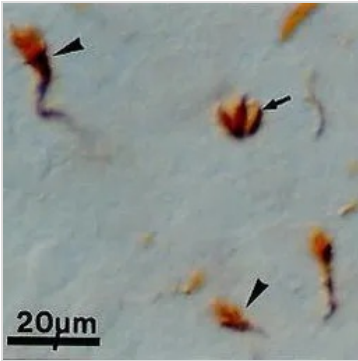
For laboratory research use only. Not for any clinical, therapeutic, or diagnostic use in humans or animals. Not for animal or human consumption.

Purchasers shall not, and agree not to enable third parties to, analyze, copy, reverse engineer or otherwise attempt to determine the structure or sequence of the product.



For full product information, images and publications, please visit our [website](#).

DATA IMAGES

**GTX27762 IHC-P Image**

IHC analysis of growth cones of primary olfactory neurons within the olfactory bulb in the developing rat brain tissue using GTX27762 Growth Cone Marker antibody [2G13].



For full product information, images and publications, please visit our [website](#).