

# Collagen III antibody

**Cat. No. GTX27778**

<b>Host</b>	Rabbit
<b>Clonality</b>	Polyclonal
<b>Isotype</b>	IgG
<b>Applications</b>	WB, ICC/IF, IHC-P, IHC-Fr, FCM, IP, Dot, ELISA, Multiplexing
<b>Reactivity</b>	Human, Mouse, Bovine, Pig

References ( 8 )

Package

100 µg

## Applications

### Application Note

\*Optimal dilutions/concentrations should be determined by the researcher.

Suggested dilution	Recommended dilution
WB	1:1000-1:10000
ICC/IF	Assay dependent
IHC-P	1:50-1:200
IHC-Fr	Assay dependent
FCM	Assay dependent
IP	1:100
Dot	Assay dependent
ELISA	1:5000-1:50000
Multiplexing	Assay dependent

Not tested in other applications.

**Calculated MW** 139 kDa. ( [Note](#) )

### Product Note

Some class-specific anti-collagens may be specific for three-dimensional epitopes which may result in diminished reactivity with denatured collagen or formalin-fixed, paraffin embedded tissues. This antibody reacts with most mammalian Type III collagens and has expected cross-reactivity with Type I and negligible cross reactivity with Type II, IV, V or VI collagens.

## Properties

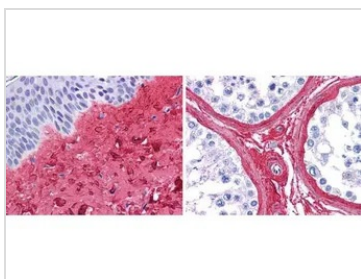
<b>Form</b>	Liquid
<b>Buffer</b>	20mM Potassium Phosphate, 150mM NaCl
<b>Preservative</b>	0.01% Sodium azide
<b>Storage</b>	Store as concentrated solution. Centrifuge briefly prior to opening vial. For short-term storage (1-2 weeks), store at 4°C. For long-term storage, aliquot and store at -20°C or below. Avoid multiple freeze-thaw cycles.



For full product information, images and publications, please visit our [website](#).

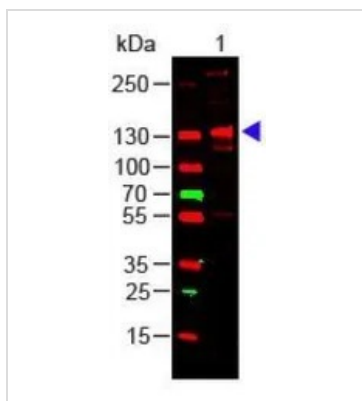
<b>Concentration</b>	1.16 mg/ml (Please refer to the vial label for the specific concentration.)
<b>Immunogen</b>	Collagen Type III from human and bovine placenta
<b>Purification</b>	Purified by antigen-affinity chromatography. Immunoaffinity chromatography using immobilized antigens followed by extensive cross-adsorption against other collagens, human serum proteins and non-collagen extracellular matrix proteins to remove any unwanted specificities.
<b>Conjugation</b>	Unconjugated
<b>Note</b>	For laboratory research use only. Not for any clinical, therapeutic, or diagnostic use in humans or animals. Not for animal or human consumption.  Purchasers shall not, and agree not to enable third parties to, analyze, copy, reverse engineer or otherwise attempt to determine the structure or sequence of the product.

## DATA IMAGES



### GTx27778 IHC-P Image

GeneTex anti collagen III antibody (GTx27778, 45 min RT) showed strong staining in FFPE sections of human skin(left, dermis) with moderate to strong red staining and testis (right) where strong staining was observed within connective tissue between seminiferous tubules. The antibody showed strong extracellular staining within connective tissues across many organs with minimal background staining. Slides were steamed in 0.01 M sodium citrate buffer, pH 6.0 at 99-100°C - 20 minutes for antigen retrieval.



### GTx27778 WB Image

Western Blot of Rabbit Anti-Collagen III Antibody (GTx27778) Load: 100 ng Human Collagen III. Primary antibody: Collagen III Antibody at 1:1000 o/n at 4°C. Secondary antibody: DyLight™ 649 Goat anti-rabbit at 1:20,000 for 30 min at RT Block for 30 min at RT. Predicted/Observed size: 138 kDa, 138 kDa.



For full product information, images and publications, please visit our [website](https://www.genetex.com).