

beta Tubulin antibody [TU-06]

Cat. No. GTX27792

Host	Mouse
Clonality	Monoclonal
Isotype	IgM
Applications	WB, ICC/IF, IHC-P
Reactivity	Human, Mouse, Rat, Bovine, Hamster, Pig, Carp

Package
100 µg

Applications

Application Note

*Optimal dilutions/concentrations should be determined by the researcher.

Suggested dilution	Recommended dilution
WB	Assay dependent
ICC/IF	Assay dependent
IHC-P	Assay dependent

Not tested in other applications.

Product Note

This antibody recognizes an epitope (aa 81-95) on phylogenetically conserved N-terminal structural domain of beta-tubulin (recognizes all beta-tubulin isoforms) in various species.

Properties

Form	Liquid
Buffer	TBS
Preservative	15mM Sodium azide
Storage	Store as concentrated solution. Centrifuge briefly prior to opening vial. Store at 4°C. DO NOT FREEZE.
Concentration	1 mg/ml (Please refer to the vial label for the specific concentration.)
Immunogen	Beta-subunits of porcine brain tubulin.
Purification	Purified by precipitation and chromatography
Conjugation	Unconjugated

Note

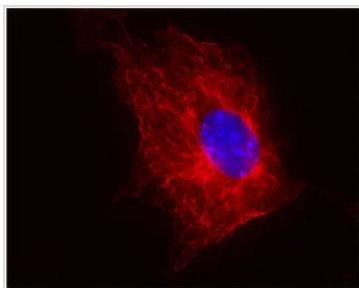
For laboratory research use only. Not for any clinical, therapeutic, or diagnostic use in humans or animals. Not for animal or human consumption.

Purchasers shall not, and agree not to enable third parties to, analyze, copy, reverse engineer or otherwise attempt to determine the structure or sequence of the product.



For full product information, images and publications, please visit our [website](#).

DATA IMAGES

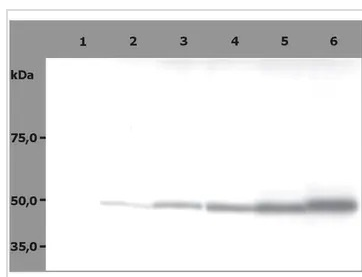


GTX27792 ICC/IF Image

ICC/IF analysis of 3T3 cells using GTX27792 beta Tubulin antibody [TU-06].

Green : Primary antibody

Blue : DAPI



GTX27792 WB Image

WB analysis of HPB-ALL cell lysate using GTX27792 beta Tubulin antibody [TU-06].

Lane 1 : Negative control

Lane 2,3,4,5,6 : GTX27792 (Dilution : 0.5, 1, 2, 4, 5 µg/ml)



For full product information, images and publications, please visit our [website](#).