

Albumin antibody [AL-01]

Cat. No. GTX27793

| | |
|---------------------|-----------------------|
| Host | Mouse |
| Clonality | Monoclonal |
| Isotype | IgG1 |
| Applications | WB, IHC-P, ELISA, RIA |
| Reactivity | Human |

References (1)

Package

100 µg

Applications

Application Note

*Optimal dilutions/concentrations should be determined by the researcher.

| Suggested dilution | Recommended dilution |
|--------------------|----------------------|
| WB | Assay dependent |
| IHC-P | Assay dependent |
| ELISA | Assay dependent |
| RIA | Assay dependent |

Not tested in other applications.

Calculated MW 69 kDa. ([Note](#))**Product Note**

This antibody reacts only with human serum albumin, a 65-67 kDa monomeric protein in human blood plasma; it is produced in liver. No cross-reactivity was observed with other serum proteins.
We do not recommend use of this product for Mouse,Rabbit,Bovine,Pig samples.

Properties

| | |
|----------------------|---|
| Form | Liquid |
| Buffer | PBS |
| Preservative | 15mM Sodium azide |
| Storage | Store as concentrated solution. Centrifuge briefly prior to opening vial. Store at 4°C. DO NOT FREEZE. |
| Concentration | 1 mg/ml (Please refer to the vial label for the specific concentration.) |
| Immunogen | Fraction of proteins containing albumin after ammonium sulphate precipitation and DEAE-chromatography of human serum. |
| Purification | Purified by precipitation and chromatography |
| Conjugation | Unconjugated |



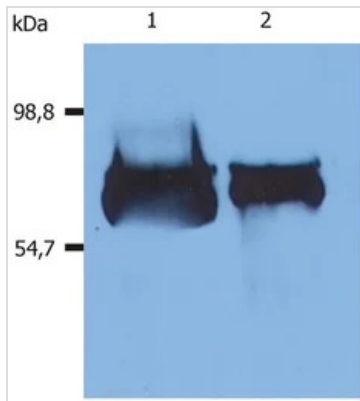
For full product information, images and publications, please visit our [website](#).

For laboratory research use only. Not for any clinical, therapeutic, or diagnostic use in humans or animals. Not for animal or human consumption.

Note

Purchasers shall not, and agree not to enable third parties to, analyze, copy, reverse engineer or otherwise attempt to determine the structure or sequence of the product.

DATA IMAGES

**GTX27793 WB Image**

WB analysis of various samples using GTX27793 Albumin antibody [AL-01].

Lane 1 : Human blood plasma

Lane 2 : Human blood serum



For full product information, images and publications, please visit our [website](#).