

# Histone H3 antibody

**Cat. No. GTX27834**

<b>Host</b>	Sheep
<b>Clonality</b>	Polyclonal
<b>Isotype</b>	IgG
<b>Applications</b>	WB, IHC-P, IP
<b>Reactivity</b>	Human, Bovine

**Package**  
125 µg

## Applications

### Application Note

\*Optimal dilutions/concentrations should be determined by the researcher.

Suggested dilution	Recommended dilution
WB	1:300
IHC-P	1:100
IP	1:1,000

Not tested in other applications.

## Properties

<b>Form</b>	Liquid
<b>Buffer</b>	PBS
<b>Preservative</b>	No preservatives
<b>Storage</b>	Store as concentrated solution. Centrifuge briefly prior to opening vial. For short-term storage (1-2 weeks), store at 4°C. For long-term storage, aliquot and store at -20°C or below. Avoid multiple freeze-thaw cycles.
<b>Concentration</b>	Batch dependent (Please refer to the vial label for the specific concentration.)
<b>Immunogen</b>	Intact calf histone H3-RNA complex. Calf Histone H3 has a 100% identity to many other mammalian histone H3 proteins.
<b>Purification</b>	Protein G Purified
<b>Conjugation</b>	Unconjugated

### Note

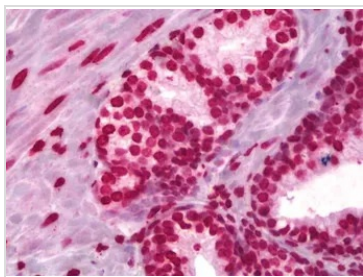
For laboratory research use only. Not for any clinical, therapeutic, or diagnostic use in humans or animals. Not for animal or human consumption.

Purchasers shall not, and agree not to enable third parties to, analyze, copy, reverse engineer or otherwise attempt to determine the structure or sequence of the product.



For full product information, images and publications, please visit our [website](#).

## DATA IMAGES



### GTX27834 IHC-P Image

IHC-P analysis of human prostate tissue using GTX27834 Histone H3 antibody.

Dilution : 5µg/ml



For full product information, images and publications, please visit our [website](#).