

# Insulin antibody

**Cat. No. GTX27842**

<b>Host</b>	Guinea pig
<b>Clonality</b>	Polyclonal
<b>Isotype</b>	IgG
<b>Applications</b>	ICC/IF, IHC-P, IHC-Fr
<b>Reactivity</b>	Human, Mouse

References ( 16 )

Package

500 µl

## Applications

### Application Note

For IHC/ICC: Use at a dilution of 1:50-1:100. Prolonged fixation in buffered formalin can destroy the epitope. Optimal dilutions/concentrations should be determined by the end user.

**Product Note** This antibody stains beta (b) cells of the Langerhan's islets in human pancreas.

## Properties

<b>Form</b>	Liquid
<b>Buffer</b>	PBS, 0.2% BSA
<b>Preservative</b>	0.09% Sodium azide
<b>Storage</b>	Store as concentrated solution. Centrifuge briefly prior to opening vial. Store at 4°C. DO NOT FREEZE.
<b>Concentration</b>	0.2 mg/ml (Please refer to the vial label for the specific concentration.)
<b>Immunogen</b>	Full length human protein
<b>Purification</b>	Neat Serum
<b>Conjugation</b>	Unconjugated

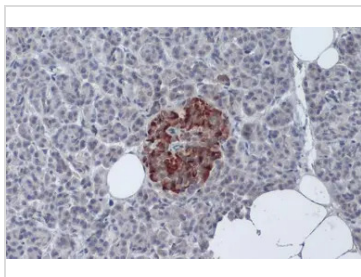
**Note** For laboratory research use only. Not for any clinical, therapeutic, or diagnostic use in humans or animals. Not for animal or human consumption.

Purchasers shall not, and agree not to enable third parties to, analyze, copy, reverse engineer or otherwise attempt to determine the structure or sequence of the product.



For full product information, images and publications, please visit our [website](#).

## DATA IMAGES



### GTx27842 IHC-P Image

Insulin antibody detects Insulin protein at cytoplasm by immunohistochemical analysis.

Sample: Paraffin-embedded human pancreas.

Insulin stained by Insulin antibody (GTx27842) diluted at 1:50.

Antigen Retrieval: Citrate buffer, pH 6.0, 15 min



For full product information, images and publications, please visit our [website](#).