

## HLA Class I antibody [W6/32]

Cat. No. GTX27855

Host	Mouse
Clonality	Monoclonal
Isotype	IgG2a
Applications	ICC/IF, IHC-Fr, FCM, ELISA
Reactivity	Human

References ( 1 )

Package

500 µg

## Applications

## Application Note

For IHC(frozen) a three-step avidin-biotin complex system, a dilution of 1:50 to 1:100 may be used as a guideline. In general, the 0.05M Borate pH 8.0 containing 0.15M Sodium Chloride, 0.05% Sodium Azide, is a good diluent to use with most antibodies. Optimal dilutions/concentrations should be determined by the researcher.

## Product Note

This antibody reacts with a monomorphic epitope of the 45 kD polypeptide, constituting the HLAA,-B and-C or class I antigen of the human major histocompatibility complex.

## Properties

Form	Liquid
Buffer	PBS
Preservative	0.1% Sodium azide
Storage	Store as concentrated solution. Centrifuge briefly prior to opening vial. Store at 4°C. DO NOT FREEZE.
Concentration	Batch dependent (Please refer to the vial label for the specific concentration.)
Immunogen	The cell membranes of human tonsil lymphocytes
Purification	Protein G affinity purified
Conjugation	Unconjugated

## Note

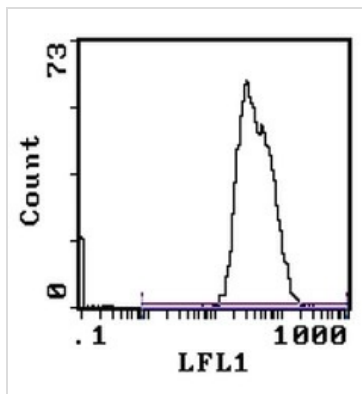
For laboratory research use only. Not for any clinical, therapeutic, or diagnostic use in humans or animals. Not for animal or human consumption.

Purchasers shall not, and agree not to enable third parties to, analyze, copy, reverse engineer or otherwise attempt to determine the structure or sequence of the product.



For full product information, images and publications, please visit our [website](#).

## DATA IMAGES



### GTx27855 FCM Image

Staining of peripheral blood lymphocytes using HLA Class I antibody (GTx27855).



For full product information, images and publications, please visit our [website](#).