

Bim antibody

Cat. No. GTX27888

Host	Rabbit
Clonality	Polyclonal
Isotype	IgG
Application	WB, IHC-P, ELISA, IHC
Reactivity	Human, Mouse, Rat

Package
100 µg

APPLICATION

Application Note

*Optimal dilutions/concentrations should be determined by the researcher.

Suggested dilution	Recommended dilution
WB	1µg/ml
IHC-P	Assay dependent
ELISA	Assay dependent
IHC	Assay dependent

Not tested in other applications.

Calculated MW 22 kDa. ([Note](#))

PROPERTIES

Form	Liquid
Buffer	PBS
Preservative	0.02% Sodium azide
Storage	Store as concentrated solution. Centrifuge briefly prior to opening vial. For short-term storage (1-2 weeks), store at 4°C. For long-term storage, aliquot and store at -20°C or below. Avoid multiple freeze-thaw cycles.
Concentration	Batch dependent (Please refer to the vial label for the specific concentration.)
Immunogen	Peptide corresponding to aa 22-40 of human Bim. The sequence is identical to that of mouse and is different by one amino acid from that of rat.
Purification	Purified by affinity chromatography
Conjugation	Unconjugated

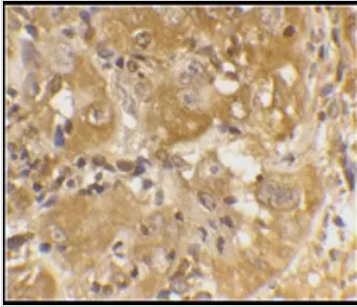


For full product information, images and publications, please visit our [website](#).

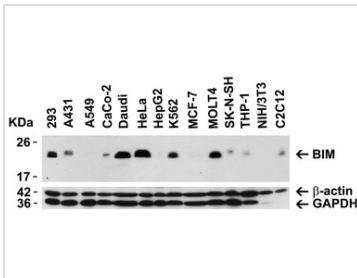
For laboratory research use only. Not for any clinical, therapeutic, or diagnostic use in humans or animals. Not for animal or human consumption.

Note

Purchasers shall not, and agree not to enable third parties to, analyze, copy, reverse engineer or otherwise attempt to determine the structure or sequence of the product.

DATA IMAGES

GTX27888 IHC Image

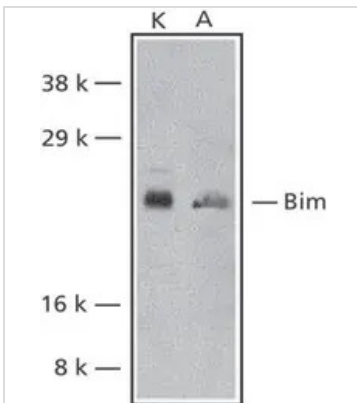
Immunohistochemistry of Bim in human skin cancer cells with Bim Antibody (Cat. No. GTX27888) at 20 µg/mL.


GTX27888 WB Image

WB analysis of various sample lysates using GTX27888 Bim antibody.

Loading : 15µg of lysates per lane

Dilution : 5 µg/ml


GTX27888 WB Image

Western blot analysis of Bim expression in human K562 (K) and A549 (A) cell lysates with Anti-Bim (Cat. No. GTX27888) at 2 µg/mL.



For full product information, images and publications, please visit our [website](https://www.genetex.com).