

NIH-3T3 whole cell lysate

Cat. No. GTX27901

Species Mouse**Package**
100 µg

PRODUCT

Summary

NIH-3T3 embryonic cells grown to 85% confluency were harvested, homogenized in modified RIPA buffer (150 mM NaCl, 50 mM Tris-Cl, 1% Triton X-100, 0.5% sodium deoxycholate, 0.1% sodium dodecyl sulfate, 1 mM EDTA, 1 mM PMSF, 5 µg/ml Pepstatin A, 2 µg/ml Leupeptin, 1 mM sodium orthovanadate, 1 mM sodium fluoride.), and cleared by centrifugation. Total protein concentration of the lysate was determined using BCA protein assay (BSA was used as a standard). Lysate was mixed with Laemmli Sample Buffer containing reducing reagent and was boiled for 5 minutes. Lysate is supplied as 200 µg in 100 µl per vial (2.0 mg/ml total protein concentration) in 1X Laemmli sample buffer.

PROPERTIES

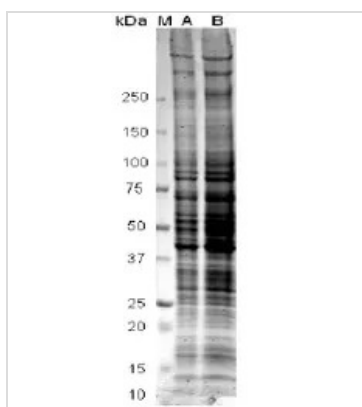
Form Liquid**Buffer** 1x SDS sample buffer, 5% β-mercaptoethanol**Preservative** No preservative**Storage** Store as concentrated solution. Centrifuge briefly prior to opening vial. Aliquot and store at -20°C or below. Avoid multiple freeze-thaw cycles.**Concentration** 1 mg/ml (Please refer to the vial label for the specific concentration.)**Purification** Whole Cell Lysate

Note

For laboratory research use only. Not for any clinical, therapeutic, or diagnostic use in humans or animals. Not for animal or human consumption.

Purchasers shall not, and agree not to enable third parties to, analyze, copy, reverse engineer or otherwise attempt to determine the structure or sequence of the product.

DATA IMAGES



GTX27901 Image



For full product information, images and publications, please visit our [website](https://www.genetex.com).