

## p21 Cip1 antibody [WA-1]

**Cat. No. GTX27903**

<b>Host</b>	Mouse
<b>Clonality</b>	Monoclonal
<b>Isotype</b>	IgG1
<b>Application</b>	WB, ICC/IF, IHC-P, ELISA
<b>Reactivity</b>	Human, Primate

**Package**  
100 µg

### APPLICATION

#### Application Note

\*Optimal dilutions/concentrations should be determined by the researcher.

Suggested dilution	Recommended dilution
WB	Assay dependent
ICC/IF	Assay dependent
IHC-P	Assay dependent
ELISA	Assay dependent

Not tested in other applications.

**Calculated MW** 18 kDa. ( [Note](#) )

### PROPERTIES

<b>Form</b>	Liquid
<b>Buffer</b>	PBS
<b>Preservative</b>	15mM Sodium azide
<b>Storage</b>	Store as concentrated solution. Centrifuge briefly prior to opening vial. Store at 4°C. DO NOT FREEZE.
<b>Concentration</b>	1 mg/ml (Please refer to the vial label for the specific concentration.)
<b>Immunogen</b>	Human p21 protein
<b>Purification</b>	Protein A purified
<b>Conjugation</b>	Unconjugated

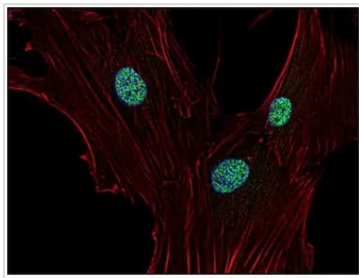
#### Note

For laboratory research use only. Not for any clinical, therapeutic, or diagnostic use in humans or animals. Not for animal or human consumption.

Purchasers shall not, and agree not to enable third parties to, analyze, copy, reverse engineer or otherwise attempt to determine the structure or sequence of the product.



For full product information, images and publications, please visit our [website](#).

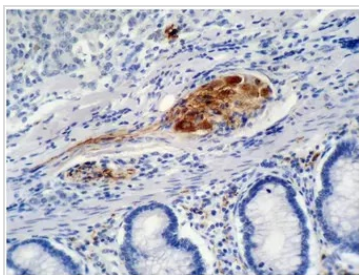
**DATA IMAGES**

**GTX27903 ICC/IF Image**

ICC/IF analysis of human primary fibroblasts using GTX27903 p21 Cip1 antibody [WA-1].

Green : Primary antibody

Red : Actin

Blue : DAPI


**GTX27903 IHC-P Image**

IHC-P analysis of colon carcinoma tissue using GTX27903 p21 Cip1 antibody [WA-1].



For full product information, images and publications, please visit our [website](https://www.genetex.com).