

HLA-G antibody [MEM-G/9] (FITC)

Cat. No. GTX27904

Host	Mouse
Clonality	Monoclonal
Isotype	IgG1
Applications	FCM, IP
Reactivity	Human

References (1)

Package

100 µg

Applications

Application Note

*Optimal dilutions/concentrations should be determined by the researcher.

Suggested dilution	Recommended dilution
FCM	Assay dependent
IP	Assay dependent

Not tested in other applications.

Product Note

This antibody reacts with native form of human HLA-G1 on the cell surface as well as with soluble HLA-G5 isoform in its beta2-microglobulin associated form. Reactivity with HLA-G3 was also reported. The antibody MEM-G/9 is standard reagent thoroughly validated during 3rd International Conference on HLA-G (Paris, 2003). We do not recommend use of this product for Mouse samples.

Properties

Form	Liquid
Buffer	PBS
Preservative	15mM Sodium azide
Storage	Store as concentrated solution. Centrifuge briefly prior to opening vial. Store at 4°C. DO NOT FREEZE. Protect from light.
Concentration	1 mg/ml (Please refer to the vial label for the specific concentration.)
Immunogen	Recombinant human HLA-G refolded with beta2-microglobulin and peptide.
Purification	Purified by size-exclusion chromatography
Conjugation	Fluorescein isothiocyanate (FITC) Wavelength

Note

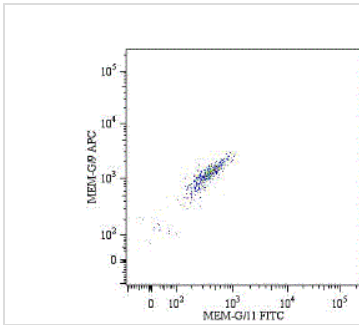
For laboratory research use only. Not for any clinical, therapeutic, or diagnostic use in humans or animals. Not for animal or human consumption.

Purchasers shall not, and agree not to enable third parties to, analyze, copy, reverse engineer or otherwise attempt to determine the structure or sequence of the product.

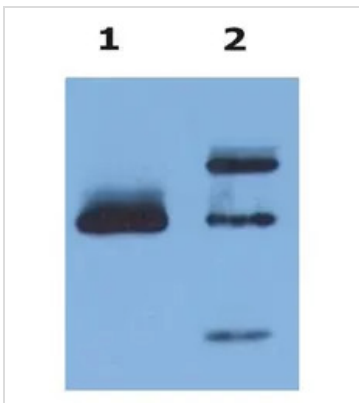


For full product information, images and publications, please visit our [website](#).

DATA IMAGES

**GTX27904 FCM Image**

Double surface staining of HLA-G1 transfectants (viable cells gate) using anti-human HLA-G (MEM-G/9) APC (GTX79919) and anti-human HLA-G (MEM-G/11) FITC (GTX78370).

**GTX27904 IP Image**

Immunoprecipitation of HLA-G from HLA-G1 transfectants (LCL-HLA-G1) by anti-human HLA-G (MEM-G/9) (GTX27758) and protein G. HLA-G was detected by anti-human HLA-G (4H84) (GTX80268) and goat anti-mouse HRP in cell lysate (Lane 1) and in the immunoprecipitate (Lane 2).



For full product information, images and publications, please visit our [website](#).