

## ERK2 antibody

Cat. No. GTX27948

Host	Rabbit
Clonality	Polyclonal
Isotype	IgG
Applications	WB, IP, IHC
Reactivity	Human, Mouse, Rat, Pig

References ( 1 )

Package

1 ml

## Applications

## Application Note

\*Optimal dilutions/concentrations should be determined by the researcher.

Suggested dilution	Recommended dilution
WB	1:400
IP	Assay dependent
IHC	Assay dependent

Not tested in other applications.

**Calculated MW** 41 kDa. ( [Note](#) )

**Product Note** This antibody reacts with ERK2 p44 and to a lesser extent ERK1 p42 of human, mouse, and rat origin.

## Properties

Form	Liquid
Buffer	PBS, 0.2% Gelatin
Preservative	0.1% Sodium azide
Storage	Store as concentrated solution. Centrifuge briefly prior to opening vial. Store at 4°C. DO NOT FREEZE.
Concentration	0.2 mg/ml (Please refer to the vial label for the specific concentration.)
Immunogen	Peptide mapping to the carboxy terminus of rat ERK2.
Purification	Purified by affinity chromatography
Conjugation	Unconjugated

## Note

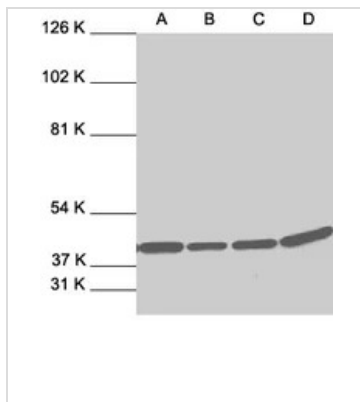
For laboratory research use only. Not for any clinical, therapeutic, or diagnostic use in humans or animals. Not for animal or human consumption.

Purchasers shall not, and agree not to enable third parties to, analyze, copy, reverse engineer or otherwise attempt to determine the structure or sequence of the product.



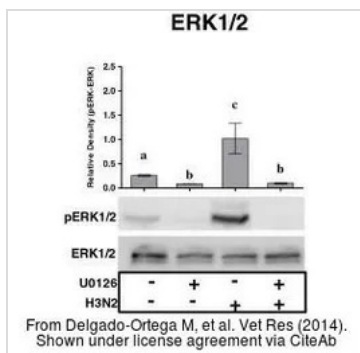
For full product information, images and publications, please visit our [website](#).

DATA IMAGES



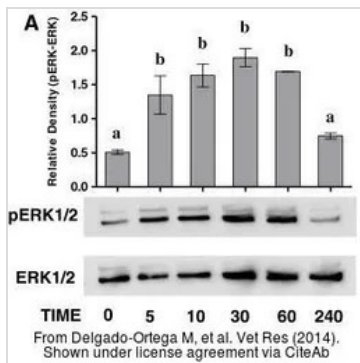
**GTX27948 WB Image**

WB analysis of A431 (A), HeLa (B), HL-60 (C) and NIH/3T3 (D) whole cell lysates using GTX27948 ERK2 antibody.



**GTX27948 WB Image**

The data was published in the journal Vet Res in 2014. [PMID: 24712747](https://pubmed.ncbi.nlm.nih.gov/24712747/)



**GTX27948 WB Image**

The data was published in the journal Vet Res in 2014. [PMID: 24712747](https://pubmed.ncbi.nlm.nih.gov/24712747/)



For full product information, images and publications, please visit our [website](https://www.genetex.com).