

JNK1 antibody

Cat. No. GTX27949

Host	Rabbit
Clonality	Polyclonal
Isotype	IgG
Applications	WB, IP, IHC
Reactivity	Human, Mouse, Rat

Package
1 ml

Applications

Application Note

*Optimal dilutions/concentrations should be determined by the researcher.

Suggested dilution	Recommended dilution
WB	1:200
IP	Assay dependent
IHC	Assay dependent

Not tested in other applications.

Calculated MW	48 kDa. (Note)
Product Note	This antibody reacts with JNK1 p46 and JNK3.

Properties

Form	Liquid
Buffer	PBS, 0.2% Gelatin
Preservative	0.1% Sodium azide
Storage	Store as concentrated solution. Centrifuge briefly prior to opening vial. Store at 4°C. DO NOT FREEZE.
Concentration	0.2 mg/ml (Please refer to the vial label for the specific concentration.)
Immunogen	Peptide mapping to the carboxy terminus human JNK1.
Purification	Purified by affinity chromatography
Conjugation	Unconjugated

Note

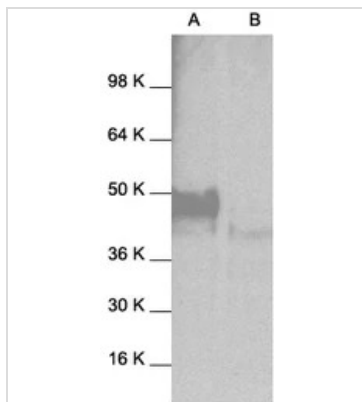
For laboratory research use only. Not for any clinical, therapeutic, or diagnostic use in humans or animals. Not for animal or human consumption.

Purchasers shall not, and agree not to enable third parties to, analyze, copy, reverse engineer or otherwise attempt to determine the structure or sequence of the product.



For full product information, images and publications, please visit our [website](#).

DATA IMAGES



GTx27949 WB Image

WB analysis of A431 (A) and HeLa (B) whole cell lysates using GTx27949 JNK1 antibody.



For full product information, images and publications, please visit our [website](#).