

# Cyclin D1 antibody

**Cat. No. GTX27958**

<b>Host</b>	Rabbit
<b>Clonality</b>	Polyclonal
<b>Isotype</b>	IgG
<b>Application</b>	WB, IHC
<b>Reactivity</b>	Human, Mouse, Rat

Reference ( 2 )

Package

1 ml

## APPLICATION

### Application Note

\*Optimal dilutions/concentrations should be determined by the researcher.

Suggested dilution	Recommended dilution
WB	1:200
IHC	Assay dependent

Not tested in other applications.

**Calculated MW** 34 kDa. ( [Note](#) )

## PROPERTIES

<b>Form</b>	Liquid
<b>Buffer</b>	PBS, 0.2% Gelatin
<b>Preservative</b>	0.1% Sodium azide
<b>Storage</b>	Store as concentrated solution. Centrifuge briefly prior to opening vial. Store at 4°C. DO NOT FREEZE.
<b>Concentration</b>	0.2 mg/ml (Please refer to the vial label for the specific concentration.)
<b>Immunogen</b>	Peptide mapping to the carboxy terminus of human cyclin D1.
<b>Purification</b>	Purified by affinity chromatography
<b>Conjugation</b>	Unconjugated

### Note

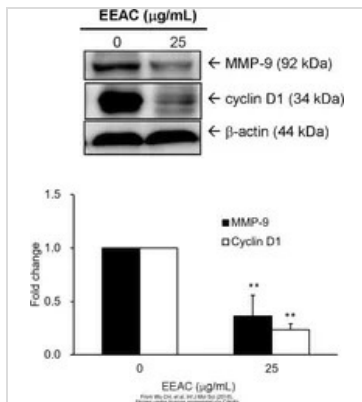
For laboratory research use only. Not for any clinical, therapeutic, or diagnostic use in humans or animals. Not for animal or human consumption.

Purchasers shall not, and agree not to enable third parties to, analyze, copy, reverse engineer or otherwise attempt to determine the structure or sequence of the product.



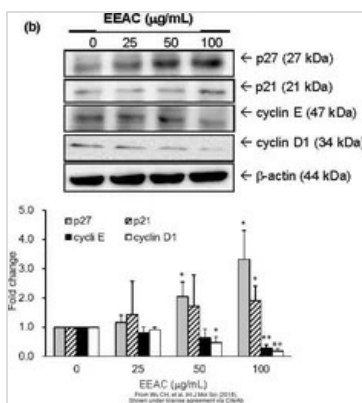
For full product information, images and publications, please visit our [website](#).

DATA IMAGES



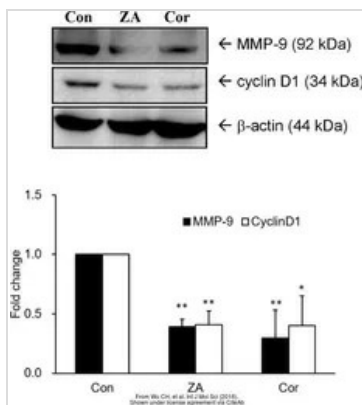
GTX27958 WB Image

The data was published in the journal Int J Mol Sci in 2018. [PMID: 29522490](https://pubmed.ncbi.nlm.nih.gov/29522490/)



GTX27958 WB Image

The data was published in the journal Int J Mol Sci in 2018. [PMID: 29522490](https://pubmed.ncbi.nlm.nih.gov/29522490/)



GTX27958 WB Image

The data was published in the journal Int J Mol Sci in 2018. [PMID: 29522490](https://pubmed.ncbi.nlm.nih.gov/29522490/)



For full product information, images and publications, please visit our [website](https://www.genetex.com).