

p21 Cip1 antibody

Cat. No. GTX27960

Host	Rabbit
Clonality	Polyclonal
Isotype	IgG
Application	WB, IHC-P, IHC-Fr, IP
Reactivity	Human, Mouse, Rat

Reference (3)

Package

1 ml

APPLICATION

Application Note

*Optimal dilutions/concentrations should be determined by the researcher.

Suggested dilution	Recommended dilution
WB	1:200
IHC-P	Assay dependent
IHC-Fr	Assay dependent
IP	Assay dependent

Not tested in other applications.

Calculated MW 18 kDa. ([Note](#))

PROPERTIES

Form	Liquid
Buffer	PBS, 0.2% Gelatin
Preservative	0.1% Sodium azide
Storage	Store as concentrated solution. Centrifuge briefly prior to opening vial. Store at 4°C. DO NOT FREEZE.
Concentration	0.2 mg/ml (Please refer to the vial label for the specific concentration.)
Immunogen	Peptide mapping to the carboxy terminus of human p21.
Purification	Purified by affinity chromatography
Conjugation	Unconjugated

Note

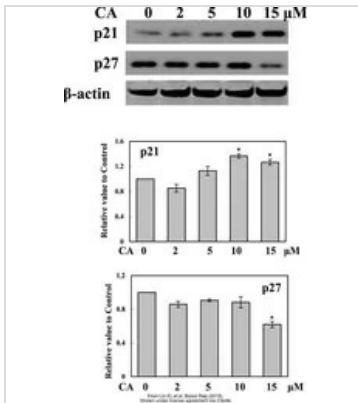
For laboratory research use only. Not for any clinical, therapeutic, or diagnostic use in humans or animals. Not for animal or human consumption.

Purchasers shall not, and agree not to enable third parties to, analyze, copy, reverse engineer or otherwise attempt to determine the structure or sequence of the product.



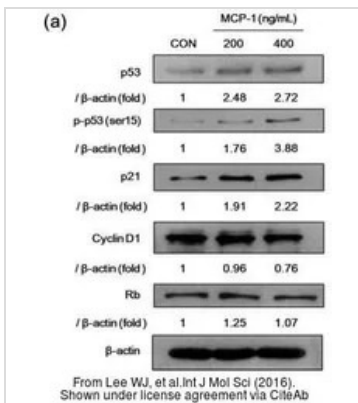
For full product information, images and publications, please visit our [website](#).

DATA IMAGES



GTx27960 WB Image

The data was published in the journal Biosci Rep in 2018. [PMID: 29789400](https://pubmed.ncbi.nlm.nih.gov/29789400/)



GTx27960 WB Image

The data was published in the journal Int J Mol Sci in 2016. [PMID: 27314341](https://pubmed.ncbi.nlm.nih.gov/27314341/)



For full product information, images and publications, please visit our [website](https://www.genetex.com).