

NFkB p65 antibody

Cat. No. GTX27970

Host	Rabbit
Clonality	Polyclonal
Isotype	IgG
Applications	WB, IHC-P, IP, EMSA
Reactivity	Human, Mouse, Rat

References (3)

Package

1 ml

Applications

Application Note

*Optimal dilutions/concentrations should be determined by the researcher.

Suggested dilution	Recommended dilution
WB	1:400 - 1:1000
IHC-P	Assay dependent
IP	Assay dependent
EMSA	Assay dependent

Not tested in other applications.

Calculated MW 60 kDa. ([Note](#))

Properties

Form	Liquid
Buffer	PBS, 0.2% Gelatin
Preservative	0.1% Sodium azide
Storage	Store as concentrated solution. Centrifuge briefly prior to opening vial. Store at 4°C. DO NOT FREEZE.
Concentration	0.2 mg/ml (Please refer to the vial label for the specific concentration.)
Immunogen	Peptide mapping to the carboxy terminus of human NFkB p65.
Purification	Purified by affinity chromatography
Conjugation	Unconjugated

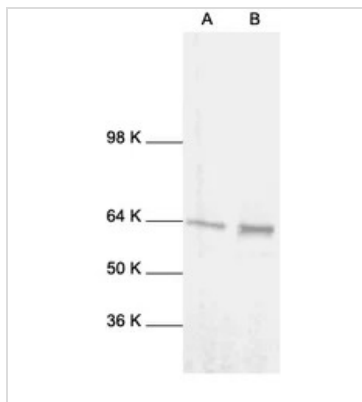
Note

For laboratory research use only. Not for any clinical, therapeutic, or diagnostic use in humans or animals. Not for animal or human consumption.

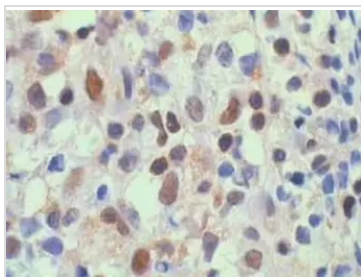
Purchasers shall not, and agree not to enable third parties to, analyze, copy, reverse engineer or otherwise attempt to determine the structure or sequence of the product.



For full product information, images and publications, please visit our [website](#).

DATA IMAGES

GTX27970 WB Image

WB analysis of A431 (A) and HeLa (B) whole cell lysates using GTX27970 NFkB p65 antibody.


GTX27970 IHC-P Image

IHC-P analysis of human diffuse large B cell lymphoma using GTX27970 NFkB p65 antibody.



For full product information, images and publications, please visit our [website](#).