

Caspase 1 antibody

Cat. No. GTX27978

Host	Rabbit
Clonality	Polyclonal
Isotype	IgG
Applications	WB, IP, IHC
Reactivity	Human

Package
1 ml

Applications

Application Note

*Optimal dilutions/concentrations should be determined by the researcher.

Suggested dilution	Recommended dilution
WB	Assay dependent
IP	Assay dependent
IHC	Assay dependent

Not tested in other applications.

Calculated MW 45 kDa. ([Note](#))

Product Note This antibody reacts with Human caspase-1 precursor (also designated ICE) but is unable to recognize caspase-1 p10 or caspase-1 p20.

Properties

Form	Liquid
Buffer	PBS, 0.2% Gelatin
Preservative	0.1% Sodium azide
Storage	Store as concentrated solution. Centrifuge briefly prior to opening vial. Store at 4°C. DO NOT FREEZE.
Concentration	0.2 mg/ml (Please refer to the vial label for the specific concentration.)
Immunogen	Peptide mapping to the amino terminus of Human caspase-1 precursor (also designated ICE).
Purification	Purified by affinity chromatography
Conjugation	Unconjugated



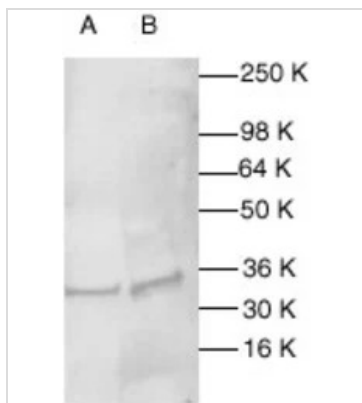
For full product information, images and publications, please visit our [website](#).

For laboratory research use only. Not for any clinical, therapeutic, or diagnostic use in humans or animals. Not for animal or human consumption.

Note

Purchasers shall not, and agree not to enable third parties to, analyze, copy, reverse engineer or otherwise attempt to determine the structure or sequence of the product.

DATA IMAGES



GTX27978 WB Image

WB analysis of HeLa (A) and MCF-7 (B) whole cell lysates using GTX27978 Caspase 1 antibody.

Dilution : 1:200



For full product information, images and publications, please visit our [website](https://www.genetex.com).