

Human Albumin protein (Biotin)

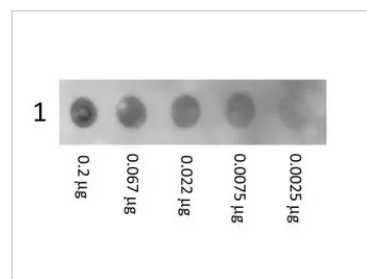
Cat. No. GTX28033-pro
Species Human

Package
1 mg

PROPERTIES

Form	Lyophilized powder
Buffer	Reconstitute with 1.0ml ddH ₂ O to 1.0mg/ml. Lyophilized from 0.02M Potassium Phosphate, 0.15M NaCl (pH7.2), 10mg/ml BSA (IgG, Protease free).
Preservative	0.01% Gentamicin Sulfate
Storage	Store at -20°C or below. After reconstitution, keep as concentrated solution. Aliquot and avoid freeze-thaw cycles.
Expression System	Normal Human Serum
Conjugation	Biotin Biotinamidocaproate N-Hydroxysuccinimide Ester (BAC).
Note	For In vitro laboratory use only. Not for any clinical, therapeutic, or diagnostic use in humans or animals. Not for animal or human consumption.

DATA IMAGES



GTX28033-pro Image

Dot Blot showing the detection of Human Albumin protein (Biotin). A three-fold serial dilution of GTX28033-pro Human Albumin protein (Biotin) starting at 200ng was spotted onto 0.45 µm nitrocellulose and blocked in 1% BSA-TTBS (diluted to 1X) 30 min at 20°C. An HRP conjugated Streptavidin (GTX27403) was incubated 1:40,000 for 30 min at 20°C.



For full product information, images and publications, please visit our [website](https://www.genetex.com).