

## Lck antibody [LCK-01]

Cat. No. GTX28075

Host	Mouse
Clonality	Monoclonal
Isotype	IgG1
Applications	WB, ICC/IF, FCM, IP
Reactivity	Human

Package  
100 µg

## Applications

## Application Note

\*Optimal dilutions/concentrations should be determined by the researcher.

Suggested dilution	Recommended dilution
WB	Assay dependent
ICC/IF	Assay dependent
FCM	Assay dependent
IP	Assay dependent

Not tested in other applications.

**Calculated MW** 58 kDa. ( [Note](#) )**Product Note** This antibody recognizes defined epitope (aa 22-36) of Lck, a 56 kDa Src-family protein tyrosine kinase. We do not recommend use of this product for Mouse samples.

## Properties

Form	Liquid
Buffer	PBS
Preservative	15mM Sodium azide
Storage	Store as concentrated solution. Centrifuge briefly prior to opening vial. Store at 4°C. DO NOT FREEZE.
Concentration	1 mg/ml (Please refer to the vial label for the specific concentration.)
Immunogen	Peptide corresponding to amino acids 22-36 in the sequence of human Lck.
Purification	Protein A purified
Conjugation	Unconjugated



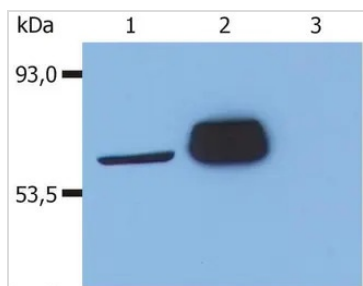
For full product information, images and publications, please visit our [website](#).

For laboratory research use only. Not for any clinical, therapeutic, or diagnostic use in humans or animals. Not for animal or human consumption.

## Note

Purchasers shall not, and agree not to enable third parties to, analyze, copy, reverse engineer or otherwise attempt to determine the structure or sequence of the product.

## DATA IMAGES



### GTX28075 WB Image

WB analysis of various samples using GTX28075 Lck antibody [LCK-01].

Lane 1 : J. CaM-1.6 (a mutant derivative of the JURKAT cell line) transfected with Lck

Lane 2 : HEK-293T transfected with Lck

Lane 3 : HEK-293T (non-transfected)



For full product information, images and publications, please visit our [website](#).