

CD3 antibody [MEM-57]

Cat. No. GTX28090

Host	Mouse
Clonality	Monoclonal
Isotype	IgG2a
Application	FACS, IP, MS
Reactivity	Human

Reference (1)
Package
100 µg

APPLICATION

Application Note

*Optimal dilutions/concentrations should be determined by the researcher.

Suggested dilution	Recommended dilution
FACS	Assay dependent
IP	Assay dependent
MS	Assay dependent

Not tested in other applications.

Product Note This antibody reacts with gamma-epsilon and delta-epsilon dimers of human CD3 complex.

PROPERTIES

Form	Liquid
Buffer	PBS
Preservative	15mM Sodium azide
Storage	Store as concentrated solution. Centrifuge briefly prior to opening vial. Store at 4°C. DO NOT FREEZE.
Concentration	1 mg/ml (Please refer to the vial label for the specific concentration.)
Immunogen	Human thymocytes and T lymphocytes.
Purification	Protein A purified
Conjugation	Unconjugated

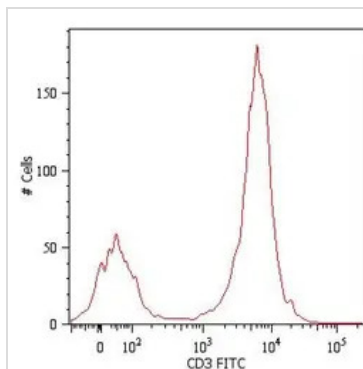
Note

For laboratory research use only. Not for any clinical, therapeutic, or diagnostic use in humans or animals. Not for animal or human consumption.

Purchasers shall not, and agree not to enable third parties to, analyze, copy, reverse engineer or otherwise attempt to determine the structure or sequence of the product.



For full product information, images and publications, please visit our [website](#).

DATA IMAGES

GTX28090 FACS Image

Surface staining of human peripheral blood cells with anti-human CD3 (MEM-57) FITC (GTX78245). Cells in the lymphocyte gate were used for analysis.



For full product information, images and publications, please visit our [website](#).