

IGF2R antibody [MEM-238]

Cat. No. GTX28093

Host	Mouse
Clonality	Monoclonal
Isotype	IgG1
Applications	WB, FCM, IP
Reactivity	Human, Mouse, Primate

References (4)

Package

100 µg

Applications

Application Note

*Optimal dilutions/concentrations should be determined by the researcher.

Suggested dilution	Recommended dilution
WB	Assay dependent
FCM	Assay dependent
IP	Assay dependent

Not tested in other applications.

Calculated MW 274 kDa. ([Note](#))

Product Note This antibody recognizes an epitope between amino acids 192-697 of CD222 (IGF2 receptor).

Properties

Form	Liquid
Buffer	PBS
Preservative	15mM Sodium azide
Storage	Store as concentrated solution. Centrifuge briefly prior to opening vial. Store at 4°C. DO NOT FREEZE.
Concentration	1 mg/ml (Please refer to the vial label for the specific concentration.)
Immunogen	Recombinant Vaccinia virus encoding CD222.
Purification	Protein A purified
Conjugation	Unconjugated

Note

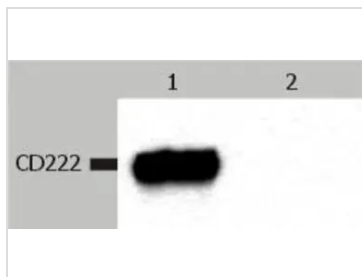
For laboratory research use only. Not for any clinical, therapeutic, or diagnostic use in humans or animals. Not for animal or human consumption.

Purchasers shall not, and agree not to enable third parties to, analyze, copy, reverse engineer or otherwise attempt to determine the structure or sequence of the product.



For full product information, images and publications, please visit our [website](#).

DATA IMAGES



GTx28093 WB Image

Fig. 1. Western Blotting analysis (non-reducing conditions) of CD222 in whole cell lysate of JURKAT human peripheral blood T cell leukemia cell line.

Lane 1: immunostaining with anti-CD222 [MEM-238]

Lane 2: immunostaining with Isotype mouse IgG1 control



For full product information, images and publications, please visit our [website](#).