

Neurofibromin antibody

Cat. No. GTX28132

Host	Rabbit
Clonality	Polyclonal
Isotype	IgG
Applications	WB, ICC/IF, IHC-P, IHC-Fr
Reactivity	Human, Mouse, Rat

Package
100 µl

Applications

Application Note

*Optimal dilutions/concentrations should be determined by the researcher.

Suggested dilution	Recommended dilution
WB	1:500 - 1:2000
ICC/IF	Assay dependent
IHC-P	1:200 - 1:500
IHC-Fr	1:200 - 1:500

Not tested in other applications.

Calculated MW 319 kDa. ([Note](#))

Properties

Form	Liquid
Buffer	Serum
Preservative	0.02% Sodium azide
Storage	Store as concentrated solution. Centrifuge briefly prior to opening vial. For short-term storage (1-2 weeks), store at 4°C. For long-term storage, aliquot and store at -20°C or below. Avoid multiple freeze-thaw cycles.
Immunogen	An N-terminal peptide of Neurofibromin 1 (within amino acids 1-50). [UniProt# P21359]
Purification	Unpurified
Conjugation	Unconjugated

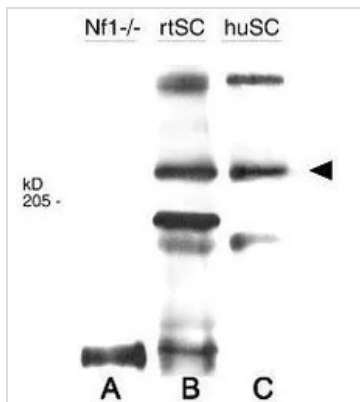
Note

For laboratory research use only. Not for any clinical, therapeutic, or diagnostic use in humans or animals. Not for animal or human consumption.

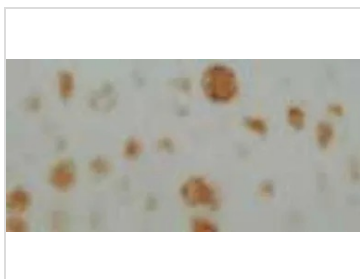
Purchasers shall not, and agree not to enable third parties to, analyze, copy, reverse engineer or otherwise attempt to determine the structure or sequence of the product.



For full product information, images and publications, please visit our [website](#).

DATA IMAGES

GTX28132 WB Image

WB analysis of (A) Neurofibromin knockout cell, (B) rat Schwann cell, and (C) human Schwann cell lysate using GTX28132 Neurofibromin antibody.


GTX28132 IHC-P Image

IHC-P analysis of maturing and the hypertrophic cartilage tissue using GTX28132 Neurofibromin antibody.



For full product information, images and publications, please visit our [website](https://www.genetex.com).